

2tec2<sup>®</sup>  
high tech flooring

# High-tech woven flooring

Brand catalogue  
2024



# High-tech woven flooring

Your responsible choice in flooring. High-tech, high design.



Collection & product Alhambra Emerald Installation pattern Ashlar



Product BB\_Kaleido diamond shape (custom) Client Moët Hennessy (FR) Architect Barbarito Bancel Photo Alessandra Chemollo

## 09 — Aesthetics & technology united

Find out how our refined high-tech woven flooring fits your everyday needs in performance and acoustics, while presenting a great look and feel.

## Sustainably produced — 25

Learn how we care for our planet by investing in more sustainable and durable products, eco-conscious production processes and a circular future.

## 37 — Sector solutions

Our vast library of products allows you to design any kind of environment: from a productive workspace, to a hospitable hotel lobby.

## Timeless collections — 71

Discover our collections: a wide range of designs and patterns, available in an abundance of colours.

## 137 — 2TEC2 Rugs

Beautiful textures to create inviting spaces.

## Installation & technical info — 143

Learn all about the high-tech performance of our refined woven flooring and practical benefits when installing.

## 148 — Samples & tools

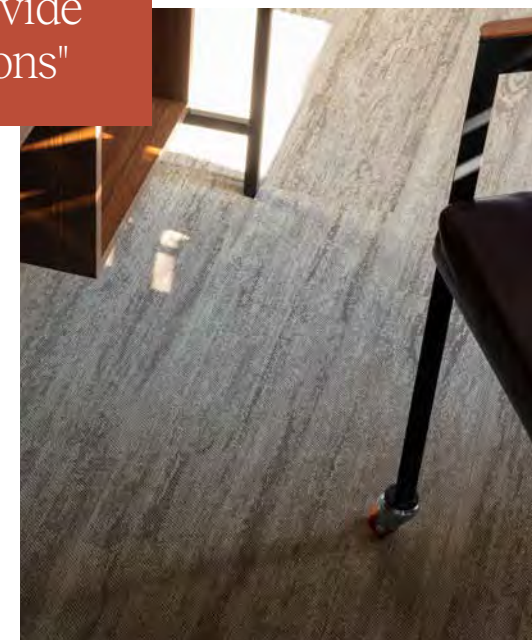
Don't hesitate: order your samples, contact us or visualise your upcoming project with our digital simulator.



## What drives us to create



"We create more than just floors, we provide solutions"

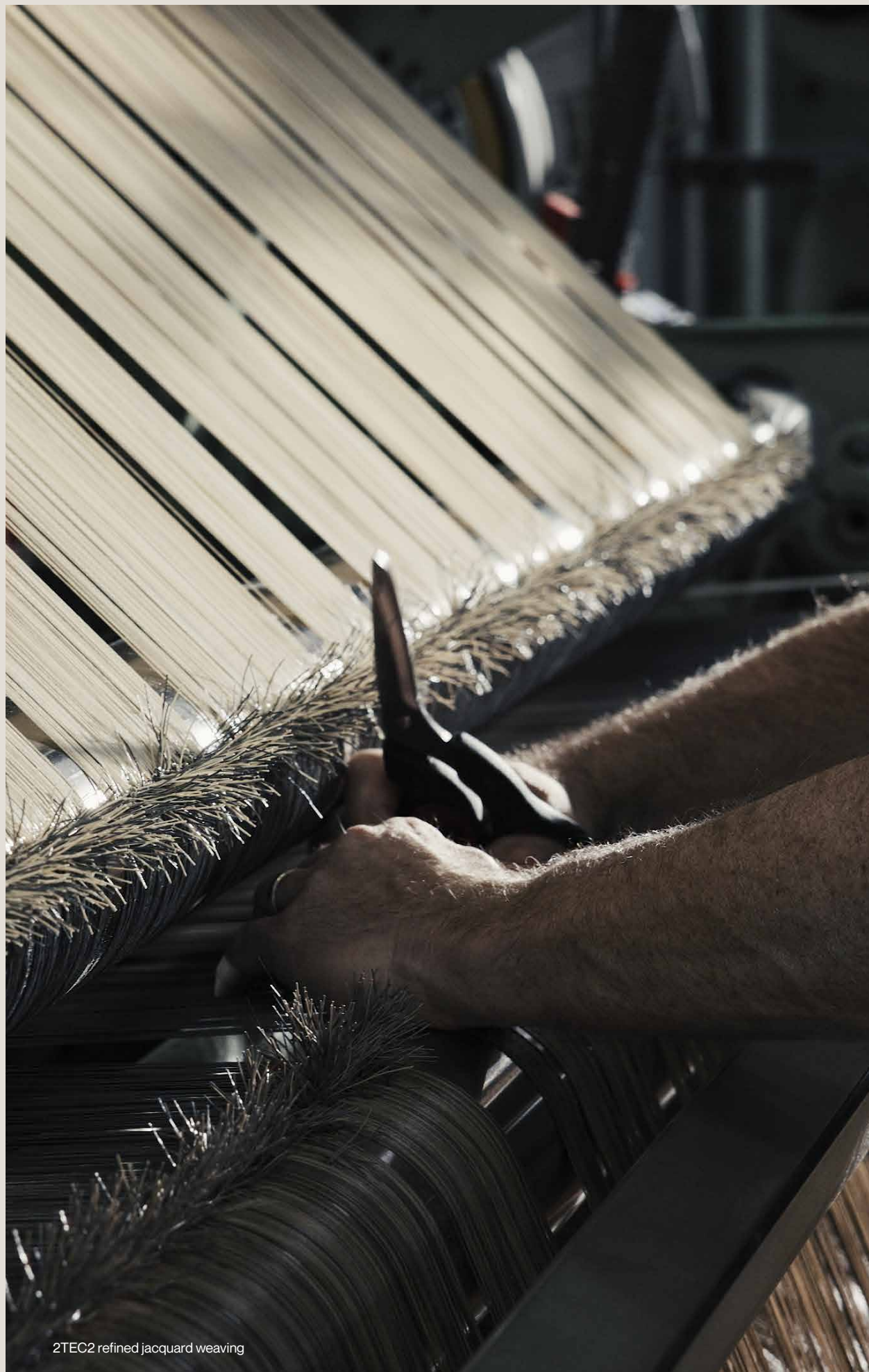


— Katia Dewitte  
Managing Director 2TEC2

"2TEC2 is a brand that continuously strives for **innovation** in terms of technology and **sustainability**. The 'TEC' in our name refers to our ambition to make a difference in the flooring world with a high-tech product for architects, for people and for the planet.

We invest heavily in the development of new materials, improved product design and a fully circular process. Sustainable entrepreneurship is our duty as a company in the years to come. We strongly believe that **design** can go hand in hand with **respect for the environment**. Aesthetics are at the heart of 2TEC2, it's our DNA. Our flooring is completely designed and produced in Belgium, guaranteeing total control and premium quality. Our personal and family-oriented nature, our passion for textures and our appreciation for craftsmanship form the basis of our business philosophy."





2TEC2 refined jacquard weaving

## Aesthetics & technology united

- Refined aesthetics — 10
- High tech, high performance — 12
- Excellent acoustics — 16
- Cleanability — 18
- Health & hygiene — 20
- Safety compliance — 22



# Refined aesthetics



## UNIQUE DESIGNS

Natural elements are the inspiration for our designs. Nature is always in balance, its appealing aesthetics never fade. This is what we strive for: to achieve natural beauty and balance indoors.

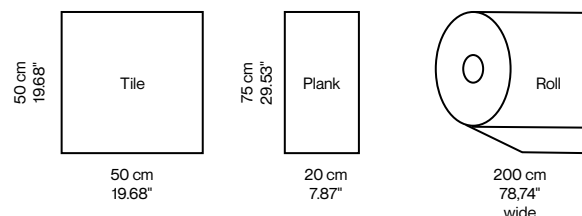
- We keep up with the newest trends in interior design.
- We provide timeless flooring that never goes out of style.
- We create our own colours and thus provide a wide range of original shades.



## ENDLESS DESIGN CREATIVITY

Our flooring is standard available in tiles, planks or rolls. You can also discover the fun and unique shapes of our Play concept on p.120. For important projects, you can create your own design and colour.

Our standard sizes:



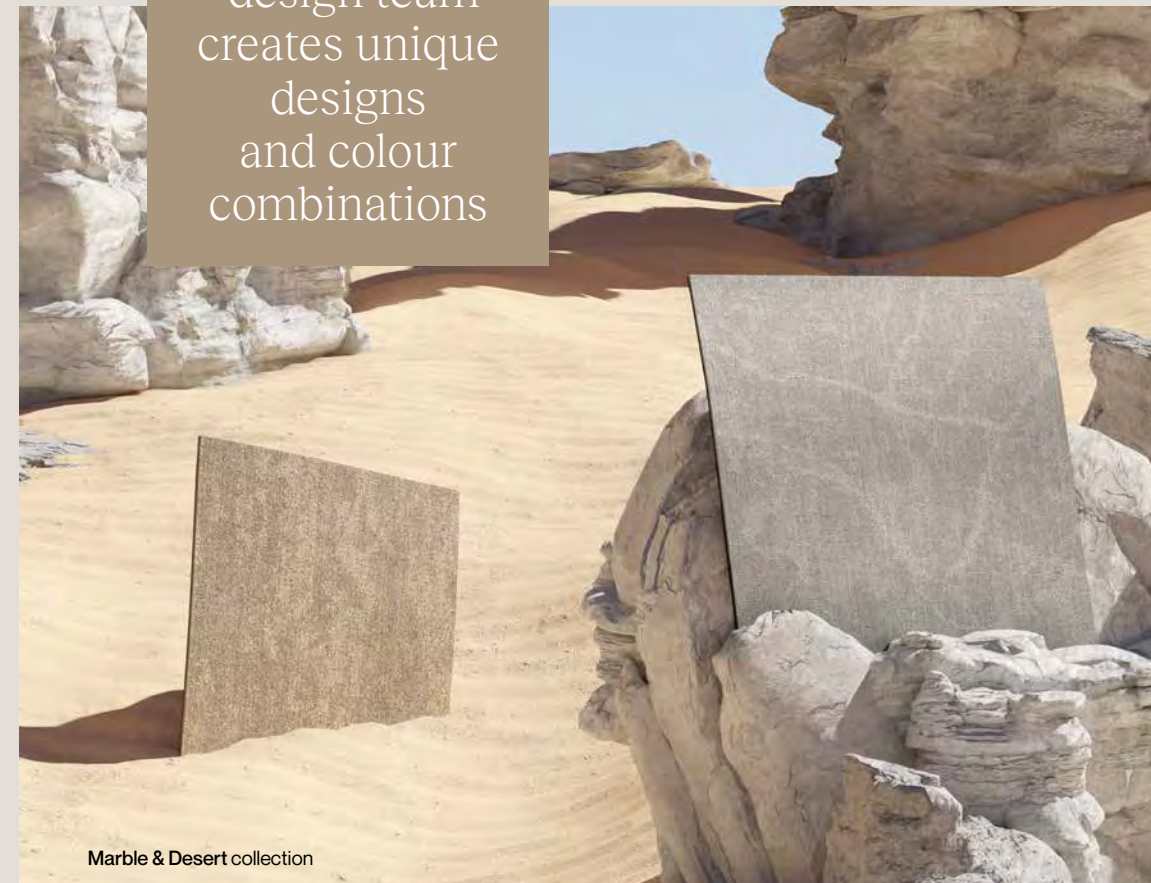
## ZONING

Flooring is the perfect way to visually and functionally define different zones in bigger spaces. By using different colours from our wide range of shades, you can easily create several areas serving different purposes.



Collection & product Hybrid Helios & Infinite Neptune tiles  
Installation pattern Ashlar

Our in-house design team creates unique designs and colour combinations



## STRUCTURE & TEXTURE

The woven top layer has a textured look and feel. Its 3D jacquard weave is very attractive.



## SEAMLESS

Nearly all our designs are seamless in an ashlar or brick installation pattern. This means you are not able to see the seams between the tiles. This creates a broadloom effect.



## COLOUR CHANGE

With our flooring, you can create a unique design effect. It offers a change of colour, depending on the installation and point of view.



## DIRT CONCEALING

Our designs can visually conceal dirt or stains, because we play with design, colour, and texture. Your floor can be thoroughly cleaned with every cleaning round.



# High tech, high performance



Our floors offer the best choice for hospitality, workspace, retail, and healthcare.

Collection & product Infinite Moonless Night tiles Installation pattern Ashlar



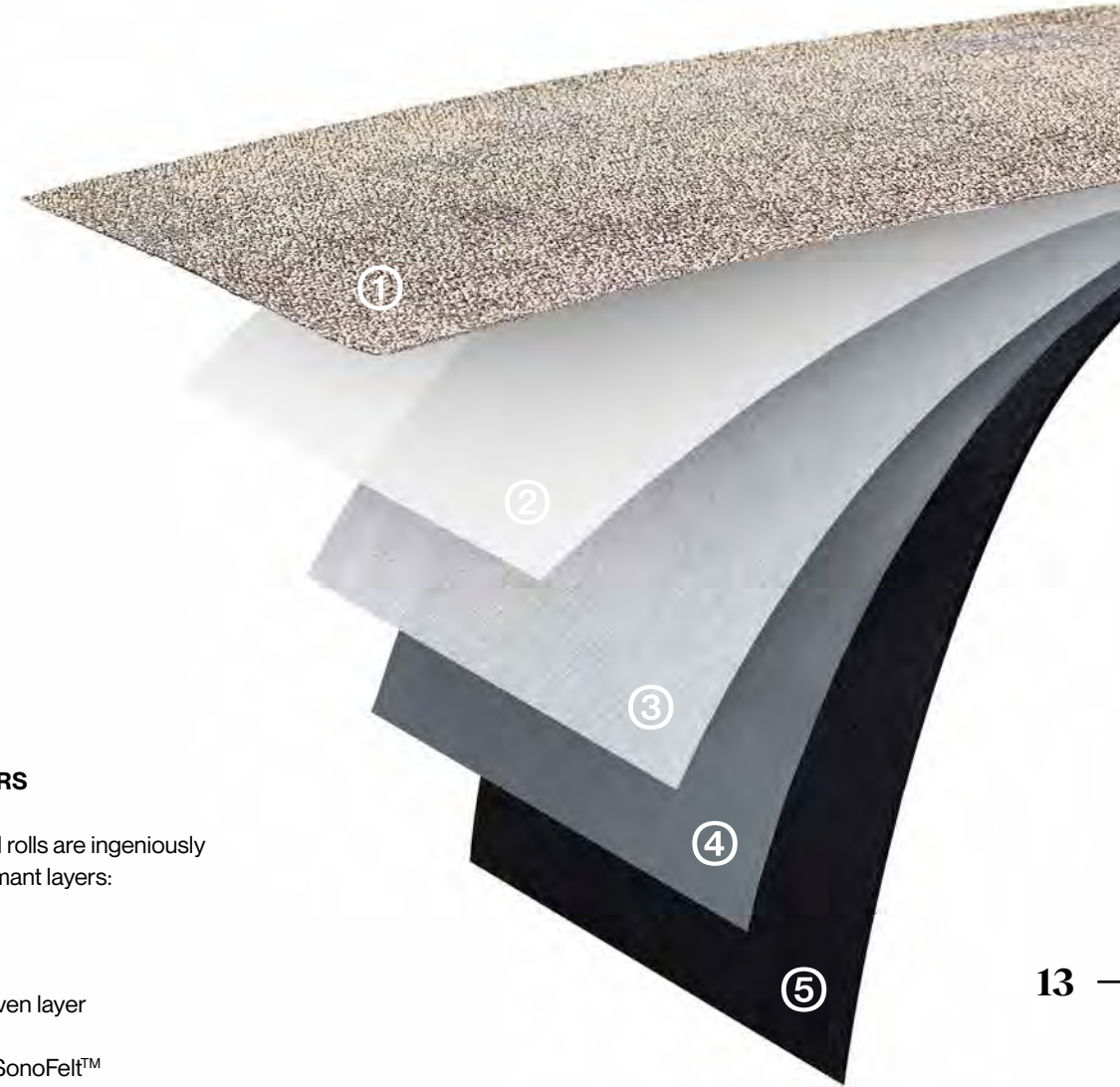
### BEST OF BOTH WORLDS

We offer the durability and cleanability of hard flooring combined with the acoustic properties and comfort of soft flooring.



### CLASS 33 HEAVY COMMERCIAL USE\*

2TEC2 floors are ideal for the project market: they are suited for high traffic levels, castor chair tested, and shockproof. Thanks to their long life span, we are confident to offer a warranty of 15 years. (\*) According to EN1307.



### STRENGTH IN LAYERS

Our high-tech tiles and rolls are ingeniously composed of 5 performant layers:

- ① Woven layer
- ② Precoat layer
- ③ Fibreglass non-woven layer
- ④ Base coat layer
- ⑤ Acoustic felt layer SonoFelt™



### COLOUR FASTNESS

Our floors retain their colours, even when exposed to heavy foot traffic and light. This is because our vinyl yarns are coloured to the core.



### LIGHT REFLECTION VALUE (LRV)

LRV is a score that indicates how much a surface reflects light. Thanks to our wide range of values, you can brighten up a room or prevent overexposure. A document with all values is available for you at your request.



### DIMENSIONAL STABILITY

Our strong build-up of layers and our tight weave with yarns with a fibreglass core guarantee a high dimensional stability. This results in minimal shrinkage or expansion when exposed to changes in temperature or humidity.



### UNDERFOOT WALKING COMFORT

The underlayer of floorings has an important impact on walking comfort and how knees, feet, and back are affected by steps. 2TEC2's felt underlayer provides extra comfort.





#### QUALITY CONTROL

All our products are quality and performance tested in external certified labs to get the necessary certificates. We also invested heavily in our own laboratory in order to perform daily in-house testing and to deliver the best quality.



#### EASY INSTALLATION

2TEC2 floors allow a hassle-free installation, they require little preparation and tools.



#### NON-PERMANENT INSTALLATION

Our tiles are installed with a tackifier adhesive. This makes them stay in place, yet easy to remove and replace when necessary or even reuse in another space.



#### RAISED FLOORING SYSTEM

2TEC2 is the perfect choice for raised flooring systems, keeping easy access to technical installations beneath the floor.



#### FLOOR HEATING

Our floors are suitable for underfloor heating or cooling, allowing installations to perform as they should.



Collection & product Desert Farafra tiles Installation pattern Monolithic



# Excellent acoustics



Our acoustic comfort backing SonoFelt™ provides maximum acoustic wellbeing.

## WHAT HAPPENS WHEN SOUND WAVES COLLIDE WITH A SURFACE

When a sound collides with a surface, it can go three ways:

- ① it can be **echoed** back
- ② it can be **absorbed** by the surface
- ③ it can **go through** the surface

Your choice of flooring has an impact on what happens and thus defines your level of **acoustic comfort**.



### ① WALKING NOISE REDUCTION

This concerns sound waves which are echoed back in the room.

'Walking noise reduction' is the difference in noise level when walking on 2TEC2 flooring compared to walking on laminate.

2TEC2's SonoFelt™ backing reduces walking noise by 70%.

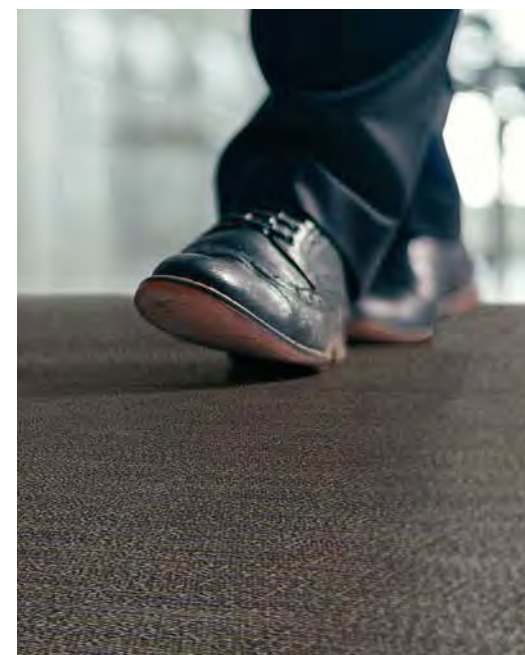
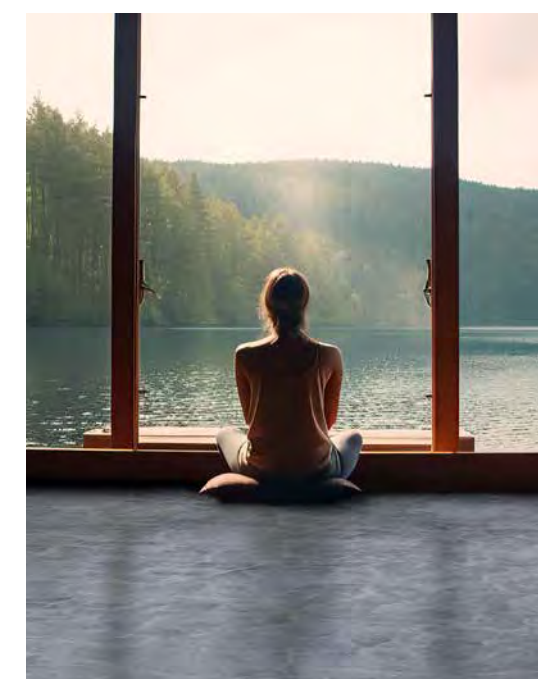


### ② ACOUSTICAL SOUND ABSORPTION

This applies to the absorbed noise in a room.

'Acoustical sound absorption' is the level of absorption of sound waves in a room. When a sound wave hits a surface, a portion of that wave is reflected, a part is absorbed. The better the absorption of a sound wave, the less reverberation.

2TEC2 absorbs 15% (0,15 aw) of the sound waves that hit the floor.

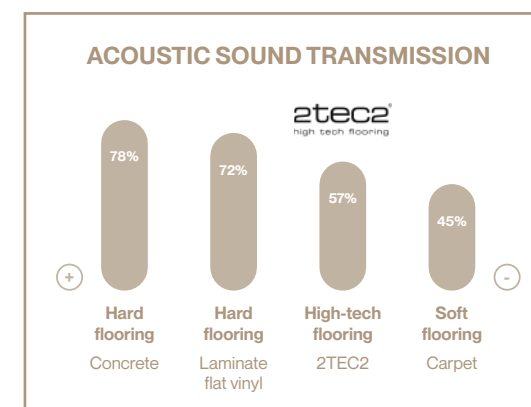


### ③ IMPACT SOUND REDUCTION

This metric refers to the level by which sound waves are transmitted through the floor into the room beneath.

'Impact sound reduction' is the difference in noise levels as measured in the room beneath the floor when walking on 2TEC2 flooring compared to walking on a concrete floor.

→ 2TEC2's 19 dB SonoFelt™ acoustic backing reduces the sound coming from the room above by 19 dB.



① Reflected noise  
70% walking noise reduction



② Absorbed noise  
0,15  $\alpha_w$  sound absorption



③ Reduced noise  
19 dB impact sound reduction



# Cleanability

A highly maintenance-friendly floor solution



## DUST RESISTANT MESH

Our top layer traps dust and dirt, allowing for effective cleaning with a vacuum cleaner and water.



## WATERPROOF

Our floors are not affected by moist conditions. They offer ease of use for spas and gyms or healthcare environments.



## EASY MAINTENANCE

Our floors can be easily cleaned with just water, there is no need for hazardous chemical cleaning products. They are also stain-resistant. Since they do not absorb any liquids, stains are easy to remove.



For optimal maintenance, we refer to our general cleaning instructions.

When 2TEC2 is placed at an entrance, a walk-off mat is recommended. Entrance matting prevents soiling and accelerated wear.

## GENERAL CLEANING INSTRUCTIONS

- Vacuum your floor regularly to avoid dirt buildup and to decrease attraction of dust.
- Remove dirt, stains and liquids by simply using water and a sponge without any additives within 24 hours.
- Diluted detergent or bleach may be used for persistent stains.
- Perform a deep cleaning at least once a year to elongate the life of your floor and keep it as beautiful as it was intended.
- Use a water injection/extraction device. Steam cleaning appliances are not recommended.





# Health & hygiene



## ANTI-ALLERGENIC PROPERTIES

The structure of our flooring keeps dust particles from floating around, so they cannot affect your health. Most of all, unlike a regular carpet, they can be easily vacuumed and removed. We don't use materials that can cause an allergic reaction.



Collection & product Infinite Coffee Bean tiles  
Installation pattern Ashlar



## ANTI-FUNGAL PROPERTIES

Our floors obtained the best score in specialised tests. This certifies that 2TEC2 floors do not allow fungi to grow, which makes them an ideal solution for moist environments.



Collection & product Infinite Moonless Night tiles  
Installation pattern Ashlar



## SUITABLE FOR DISINFECTION

Our floors are resistant to disinfectants, a necessity in healthcare environments. The yarn's colour intensity is not affected, even after years of maintenance.



## NO HARMFUL VOLATILE ORGANIC COMPOUND EMISSIONS (VOC'S)

2TEC2 flooring ensures a safe and healthy environment without indoor air pollution. Our floors are Indoor Air Comfort Gold and FloorScore certified, meaning they release no harmful VOCs.

We avoid the use of harmful raw materials in the production of our floors.



Collection & product Infinite Moonrock tiles Installation pattern Ashlar



# Safety compliance



## ANTI-SLIP PROPERTIES

Our floors have **anti-slip properties**, which minimises the risk of falling. This makes us an excellent option for healthcare environments and public spaces.



## NO DANGEROUS SUBSTANCES

Our flooring contains **no dangerous substances** like **phthalates** and heavy metals. We are REACH compliant and M1 certified.



## REACTION TO FIRE

All our floors are fire-retardant. 2TEC2 features a **Bfl-s1 classification**, the most strict fire class for textile floor covering.



## ANTI-STATIC PROPERTIES

Walking on plastic or carpeted floors creates friction that can make you electrically charged. Thanks to our anti-static additives, we prevent this from happening.

Safety  
beneath your  
feet with  
2tec2<sup>®</sup>  
high tech flooring



Collection & product Infinite Moonrock Installation pattern Ashlar Client WZC Kapittelhof (BE)



Collection & product Hybrid Magellan tiles Installation pattern Ashlar





Collection & product Strata Serpentine tiles Installation pattern Ashlar A/B

## Sustainably produced

2TEC2 is devoted to designing and producing **recyclable woven flooring**. We aim for the highest sustainability performance, while preserving and protecting the world beneath our feet.

- Care for our planet & environment — **26**
- Care for people & health — **27**
- Bio-based materials — **28**
- Circularity & recyclability — **29**
- Our new recycling facility — **30**
- Our journey towards a circular future — **32**
- Compliance & certifications — **34**



# Care for our planet & environment



# Care for people & health

## STRATEGIES FOR RESPONSIBLE PRODUCTION

- Decrease our CO<sub>2</sub> emissions
- Reduce our use of (non-renewable) fossil raw materials

## SOLAR POWER

We avoid 820 tons of greenhouse gas emissions per year, thanks to 3.154 photovoltaic panels on our buildings that capture a massive quantity of solar power to reintroduce in our production.



2TEC2 Production facility

## NO PHTHALATES NOR HEAVY METALS

2TEC2 complies with the most strict norms in its field, to make sure our customers are not exposed to hazardous chemicals. Our floor tiles, planks and rolls do not contain any phthalates or heavy metals.

## EXCELLENT ACOUSTIC PERFORMANCE

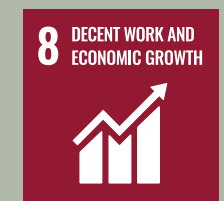
Acoustics play an important role in well-being and comfort in a room.

## MENTAL WELL-BEING

A beautiful environment makes people happy. Our floorings contribute to healthy buildings by creating pleasant, creative and comfortable spaces.

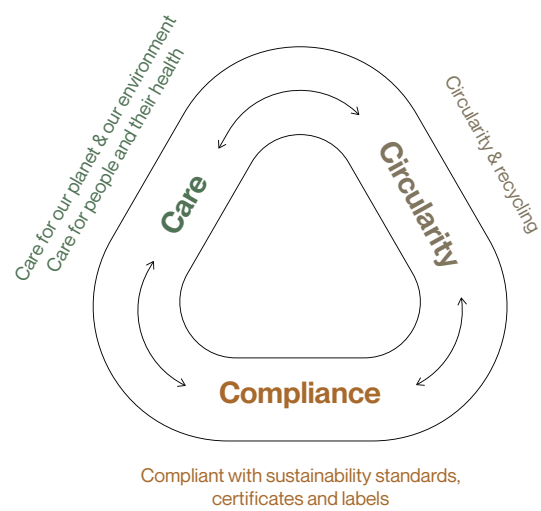
## SUSTAINABLE DEVELOPMENT GOALS

2TEC2 is committed to contribute to the following United Nations Sustainable Development goals:



## HYGIENE AND CLEANABILITY

Thanks to our unique woven structure that captures dirt particles until the next cleaning round, 2TEC2 flooring solutions actively contribute to a cleaner air in the room. With the ease of cleaning 2TEC2, your personal surroundings will remain spotless and healthy at all times.



## THE 3 C'S

Our sustainability pillars and our vision are centred around care, circularity and compliance.

## INTEGRATED PRODUCTION

We avoid harmful CO<sub>2</sub> emissions of multiple transports to and from suppliers of raw or semifinished materials by integrating all of our production operations and activities on one site.

## OPTIMISED CLOSED CIRCUIT ENERGY RE-USE

We have a heat recovery system that re-uses already present energy and a closed water cooling system to minimise water use.

## ENERGY STORAGE

We increase our use of renewable energy even more through a battery energy storage system (BESS) at our own premises. This enormous battery stores the excess solar power produced by our photovoltaic panels.



## Bio-based materials

### BIO-BASED MATERIALS IN OUR FLOORS

As part of our pioneering journey we created a bio-based vinyl compound which is used in the top layer of our woven flooring. We replaced materials on the basis of fossil carbon in the compound formula of the PVC pellets that are used to make our vinyl yarns of the toplayer, with materials on the basis of biological origin.

Thanks to this innovation, the woven top layer of collections with this feature consists of **45% more renewable bio-based content**, meaning this reduces the consumption of virgin fossil materials by 45%.

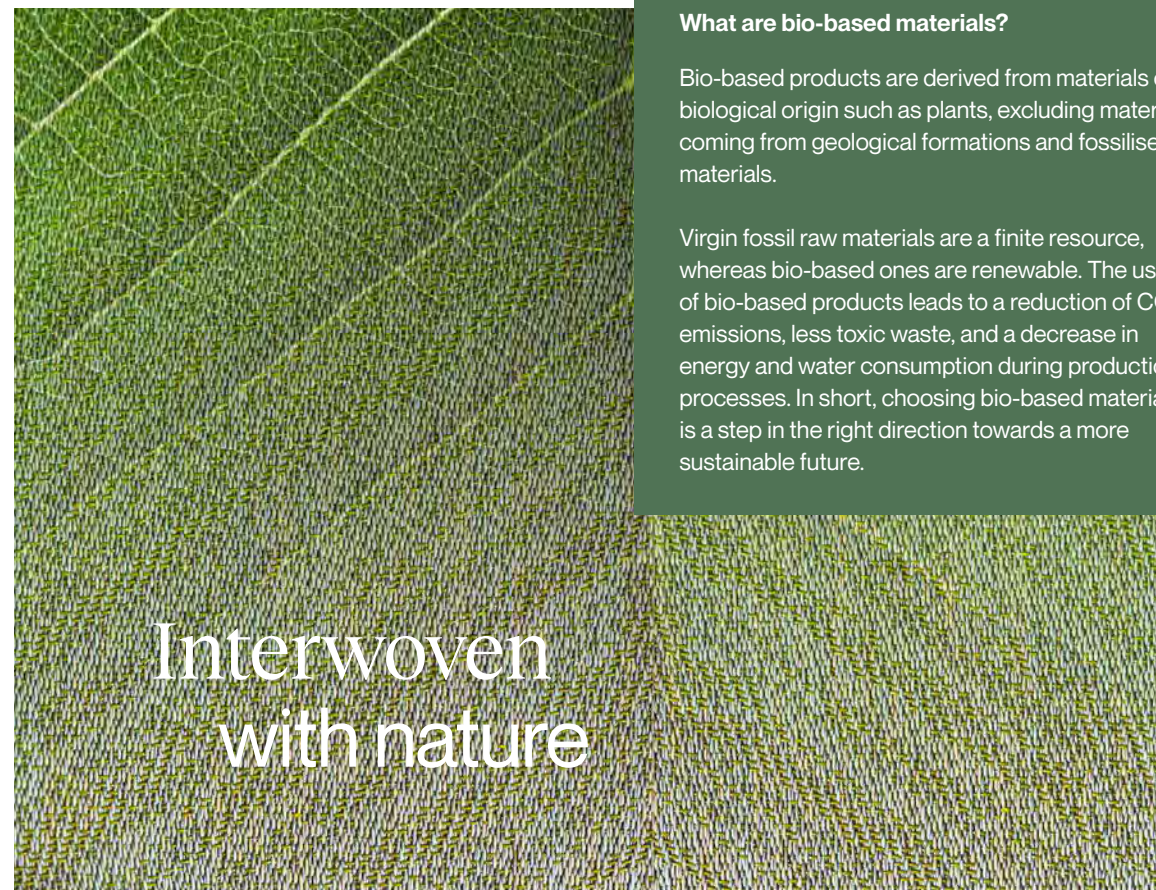


Bio-Based

#### What are bio-based materials?

Bio-based products are derived from materials of biological origin such as plants, excluding materials coming from geological formations and fossilised materials.

Virgin fossil raw materials are a finite resource, whereas bio-based ones are renewable. The use of bio-based products leads to a reduction of CO<sub>2</sub> emissions, less toxic waste, and a decrease in energy and water consumption during production processes. In short, choosing bio-based materials is a step in the right direction towards a more sustainable future.



Interwoven  
with nature

## Circularity & recyclability

### RECYCLED CONTENT

We save the equivalent of 15.000 PET bottles for every 1000 m<sup>2</sup> flooring. Our current felt underlayer is composed of 70% PET recycled contents. In a continuous process of innovation, we aim to increase this share even more.



### RECYCLABILITY

All of 2TEC2 tiles, rolls and planks are 100% recyclable. All materials introduced in our circular production cycle are meticulously quality-checked for composition and performance. 2TEC2 is designed and produced to be fully recycled and to regenerate new 2TEC2 flooring again and again – without losing strength.

### WASTE MANAGEMENT

We sort and organise our waste and used materials in all operations to ensure a maximum of recycling possibilities with these resources. Yarn waste, end-of-bobbin yarns, weave excess, cut waste, samples, second-quality tiles and all other leftover materials are carefully collected so they can be sent to our new recycling facility. Leftover yarns are also being re-used to create beautiful outdoor rugs for our sister company Limited Edition.



2TEC2 waste material forms the basis for new 2TEC2 production resources.



# Our new recycling facility



## A FULLY CIRCULAR ECOSYSTEM

Built a few kilometers from our production site, a brand new recycling facility will convert pre-consumer production waste into new raw material that will serve as a basis to compose new, strong and attractive 2TEC2 tiles.

These 2TEC2 tiles will include more than 50% recycled content in total. There will be no change to the visual aspect, stability, performance and durability in this regenerated flooring.



2TEC2 In-house recycling plant

2tec2  
high tech flooring  
Towards a fully circular future



Shredded waste

”

As pioneers in this field, we see an exciting challenge in contributing to the preservation of the planet's finite resources.



Interwoven with a circular future

**CIRCULARITY**  
2TEC2 is designed and produced to regenerate new 2TEC2 flooring again and again.



**RECYCLING**  
All manufacturing waste and 2TEC2 flooring at end of life is being recycled in our own recycling plant.

**RE-USE**  
All 2TEC2 recycled material is being entirely re-used in our production facility. 2TEC2 flooring is manufactured with more than 50% recycled content.



# Our journey towards a circular future

**2005**  
**LONG-LASTING DURABILITY**

From the start, the product was designed to be durable and long-lasting.



**2013**  
**REDUCING AND RE-USING  
PRE-CONSUMER WASTE**

Leftover yarns are smartly used in the production of outdoor rugs of our sister company and other products.

**2017**  
**INTRODUCING RECYCLED CONTENT**

The Acoustic Comfort Backing now contains recycled PET content.



**2019**  
**REDUCING OUR CARBON FOOTPRINT**

2TEC2 invests in **solar installations** and a **heat recovery system**. We install a fully integrated production cycle to ensure a durable, long-lasting quality, and to drastically improve our ecological footprint and energy consumption.

**2023**  
**DESIGN FOR CIRCULARITY**

- Investments towards a greener future:
- R&D and operations adjustments
  - New product design
  - Building our new in-house recycling plant



**2023**  
**REVOLUTIONARY INNOVATION:  
ADDING BIO-BASED CONTENT TO OUR  
FLOORS**

Pioneering in our type of product, we have launched our floorings with bio-based content in the top layer's woven structure. A major step in our journey to reducing fossil-based materials.

**2023**  
**INCREASING OUR RECYCLED CONTENT**

We introduce SonoFelt™, our new felt underlaying backing, composed of minimum 70% recycled PET and reducing noise by 19dB or more.

**2024**  
**A FULLY CIRCULAR FUTURE**

We will fully re-use and recycle our floors, production waste and leftover materials into new 2TEC2 tiles or rolls.



**HOW DO WE PLAN TO REACH OUR GOAL  
OF BEING FULLY RECYCLABLE WITH 0%  
VIRGIN FOSSIL RAW MATERIAL?**

- ✓ Using bio-based materials
- ✓ Using more recycled contents
- ✓ Producing a fully recyclable product
- ✓ Operating our own recycling facility



# Compliance & certifications

## PROOF OF EXCELLENCE

2TEC2 understands the importance of providing credible and transparent evidence of our commitments and actions. Our international certification experts are tasked with documenting test results, accurate product performance and composition information. We comply with a series of respectful international certificates and labels, to show the world how much we care about product quality, human health and the environment.

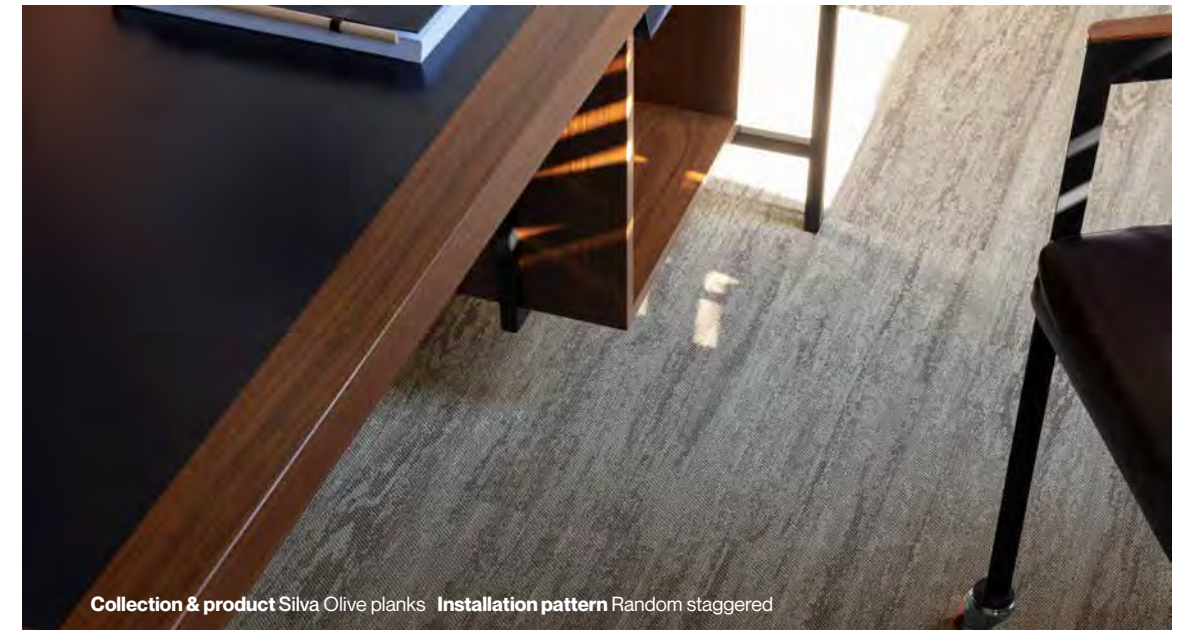


2TEC2 in-house lab

## CONTRIBUTING TO HEALTHY AND SAFE BUILDINGS

In order to help you achieve the building certifications schemes LEED and BREEAM, 2TEC2 can contribute credits (up to 16 for BREEAM and 20 for LEED). These credits reflect contributions to impact categories including health and well-being, energy, responsible choice of materials, acoustics, the product's life cycle, environmental impact and waste management. This provides reassurance to our customers that buildings using our flooring solutions are as healthy and non-harmful as possible.

The WELL Building Standard is a vehicle for buildings and organisations to deliver more thoughtful and intentional spaces that enhance human health and comfort. In the categories air, light, sound and materials, 2TEC2 can substantially contribute to the score of your building: we can help you with 2 Preconditions and 10 Optimisations.



Collection & product Silva Olive planks Installation pattern Random staggered

## OUR CERTIFICATES

We comply with a wide range of health, durability and ecological audits, certifications and labels.





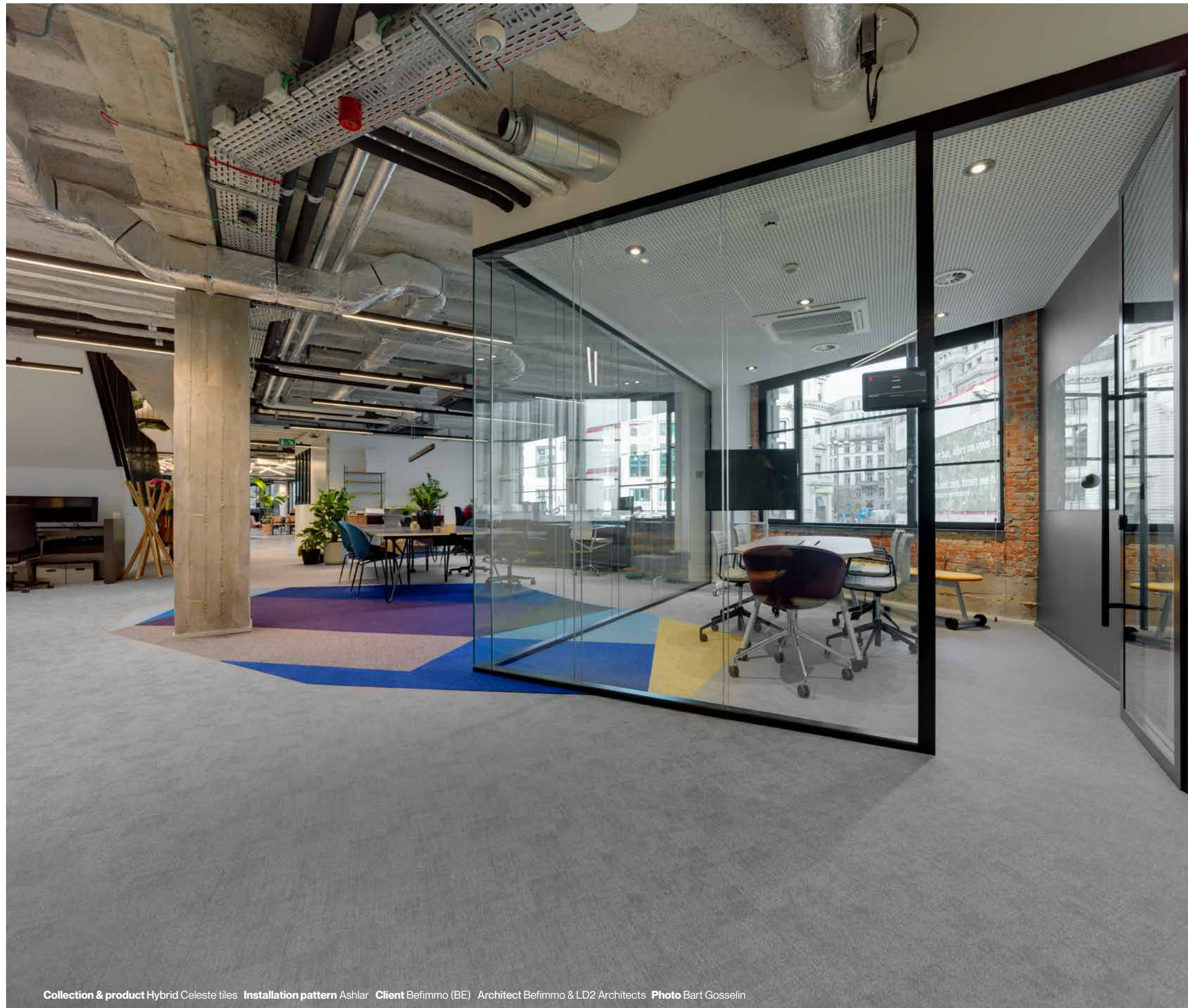


Collection & product Colourful Fireball tiles Installation pattern Ashlar Project Al Fakher (UAE)  
Architect Veena Siddharth Design Studio Photo Claudie Strydom

## Sector solutions

- Workspaces — 39
- Hospitality — 45
- Healthcare — 51
- Public spaces — 55
- Retail & showrooms — 61
- Residential / Multi-family — 65
- Leisure & gyms — 67





## Workspaces

Workspaces should inspire productivity and creativity. Our designer patterns, combined with acoustic backing, castor chair resistance, and durability, promise your boardrooms and open workspaces will look and feel stunning, and stay that way.

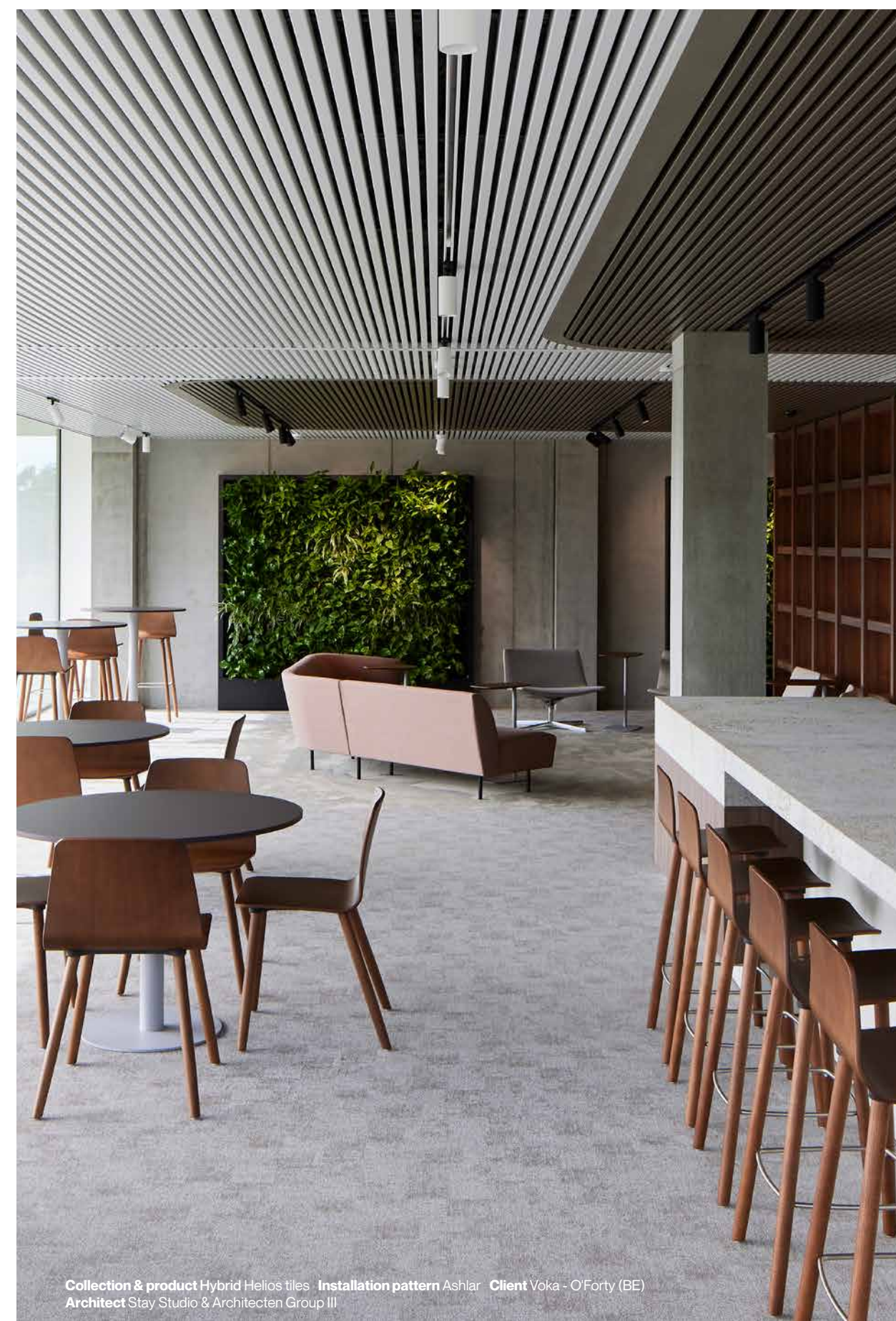
### Main features

- + Castor chair resistance
- + Acoustic sound absorption
- + Hygienic & easy to clean
- + Fire-retardant
- + Endless design creativity
- + Healthy indoor air quality
- + Long-lasting new appearance
- + Slip-resistant
- + Suitable for raised flooring system
- + Non-permanent floor solution





Collection & product Infinite Coffee Bean tiles Installation pattern Ashlar Client Workout Events (ES) Architect MIL Studio Photo Daniel Schäfer



Collection & product Hybrid Helios tiles Installation pattern Ashlar Client Voka - O'Forty (BE) Architect Stay Studio & Architecten Group III









Collection & product Hybrid Magellan tiles Installation pattern Ashlar

## Hospitality

Combining the best elements of soft and hard surface flooring, our solutions enhance your hotel's or restaurant's atmosphere and ensure your guests feel right at home.

45 —

### Main features

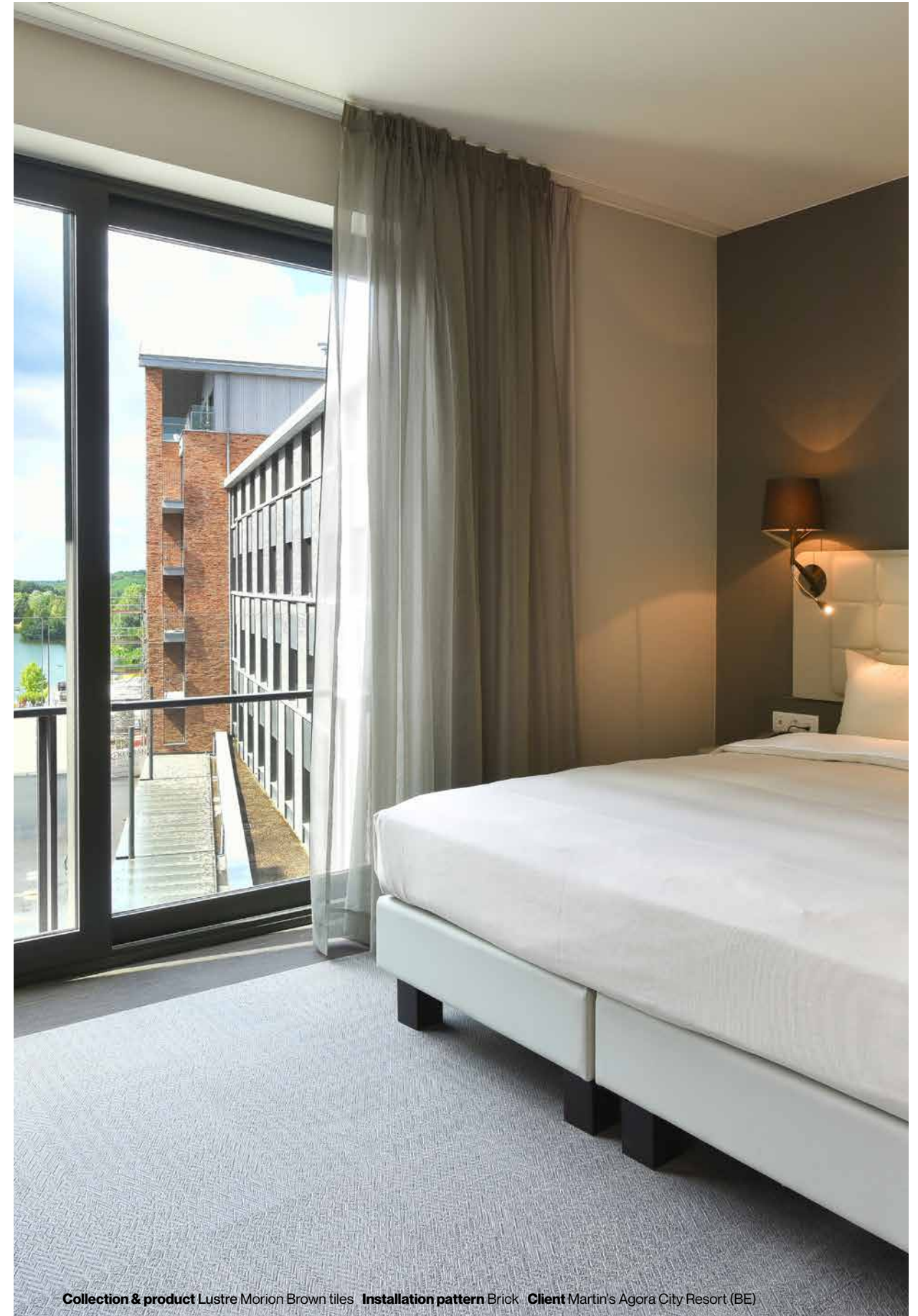
- + Design versatility
- + Hygienic & easy to clean
- + Class 33 heavy usage
- + Acoustic sound absorption
- + Slip-resistant
- + Colour fastness
- + Anti-fungi
- + Fire-retardant
- + Healthy indoor air quality
- + Dirt-hiding & stain-resistant

**Chosen by** Four Seasons Georges V, RIU hotels, JW Marriott, Accor Hotels, Le Sanglier des Ardennes





Collection & product Silva Ebony planks Installation pattern Herringbone



Collection & product Lustre Morion Brown tiles Installation pattern Brick Client Martin's Agora City Resort (BE)





MEETING & LOUNGE  
CONCIERGE  
ELEVATORS  
FITNESS  
RESTROOMS





## Healthcare

2TEC2's unlimited product collections offer a selection of colours and designs that will provide comfort to your patients and those caring for them. Mostly, our woven flooring is not only beautiful, but also easy to clean, antibacterial, safe and comfortable: qualities that are essential to any healthcare environment.

### Main features

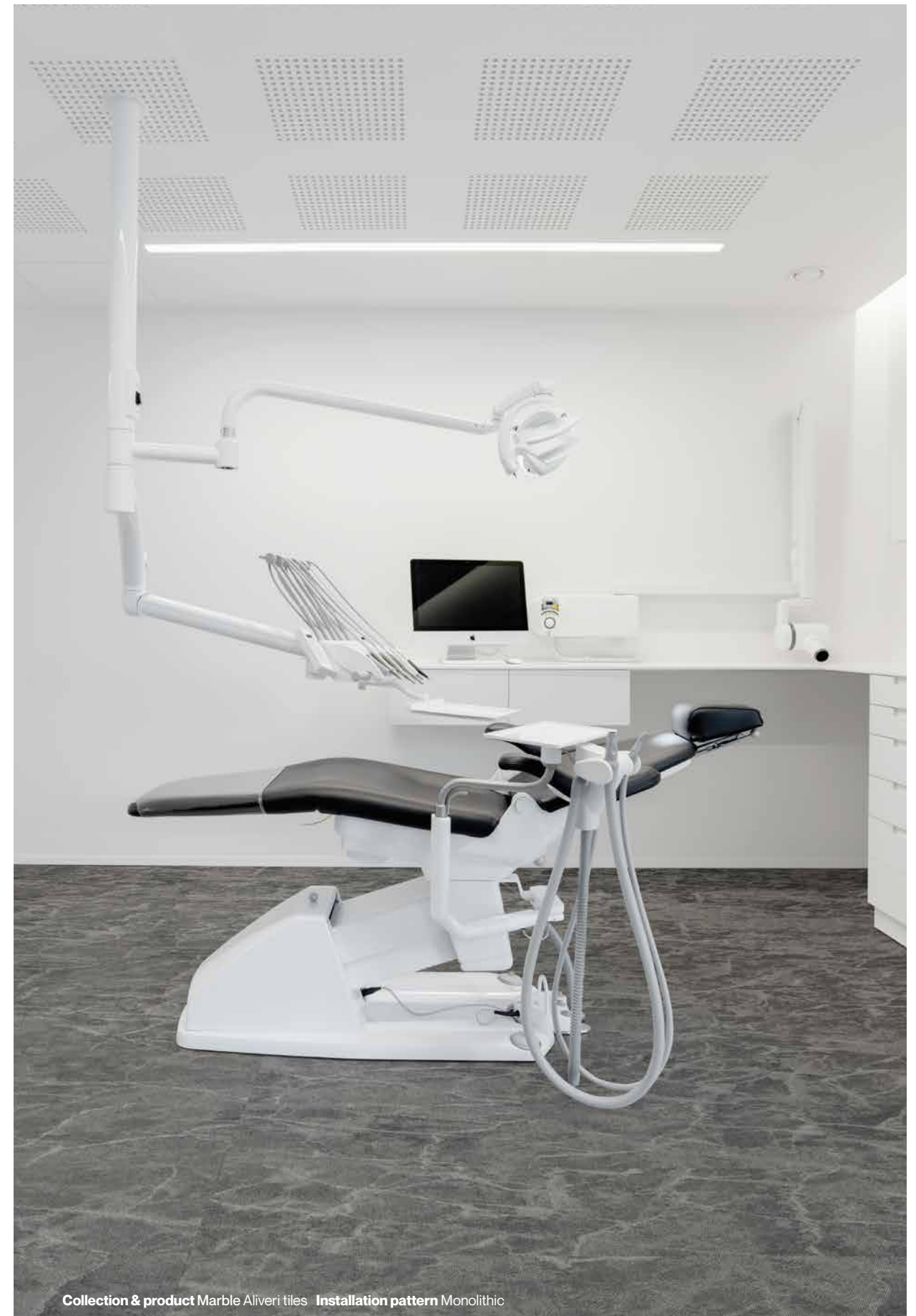
- + Design versatility
- + Hygienic & easy to clean
- + Class 33 heavy usage
- + Acoustic sound absorption
- + Odourless
- + Well-being of patients and visitors
- + Anti-allergic properties
- + Suitable for disinfection
- + Anti-static properties
- + Slip-resistant

**Chosen by** Sensabell Clinic, Clinica Pof. Luis Jardim, Odontolia, Antwerp Eye Care, Kapittelhof nursing home





Collection & product Infinite Moonrock Installation pattern Ashlar Client WZC Kapittelhof



Collection & product Marble Aliveri tiles Installation pattern Monolithic





Collection & product Infinite Planet tiles Installation pattern in 2 different directions to create a crosswalk Client Airport Split (HR) Architect Ivan Vulić Photo Marko Mihaljević

## Public spaces

Public spaces need flooring that is comfortable and lasting. The durability and maintainability of our woven vinyl allows your flooring to stand the test of time under heavy commercial use. Design a public forum that fits your needs with our endless combinations of striking colours and designs.

### Main features

- + Class 33 heavy usage
- + Acoustic sound absorption
- + Hygienic & easy to clean
- + Innovative design
- + Fire-retardant
- + Slip-resistant
- + Healthy indoor air quality
- + Anti-fungi
- + Dirt-hiding & stain-resistant
- + Seamless

**Chosen by** New York Public Library, Split Airport, UGC cinemas, Library@Harbourfront Singapore, EDHEC Business School













## Retail & showrooms

The use of high-end and durable materials will help you maintain a clean retail space, allowing your floor to continue to shine even after years of heavy use.

### Main features

- + Design versatility
- + Class 33 heavy usage
- + Hygienic & easy to clean
- + Acoustic sound absorption
- + Fire-retardant
- + Slip-resistant
- + Colour fastness
- + Suitable for raised flooring systems
- + Non-permanent installation
- + Structure & texture

**Chosen by** Porsche, Samsung, Mees Van De Wiele, Selfridges, Nishinomiya Gardens, The Hub, Broeinest, The Arq Showroom









## Residential & multi-family

Your home should be your oasis, a place of comfort to return to. Easily cleaned, durable, and customisable to fit your space, our flooring is the perfect way to turn a house into a home.

### Main features

- + Acoustic sound absorption
- + Easy installation
- + Anti-allergic properties
- + Hygienic & easy to clean
- + Innovative design
- + Fire-retardant
- + Healthy indoor air quality
- + Anti-fungi
- + Anti-static properties
- + Long-lasting fresh appearance





## Leisure & gyms

Our boundless selections of beautiful, customisable floorings will elevate your wellness or gym, accentuating the atmosphere you want to display to your visitors.

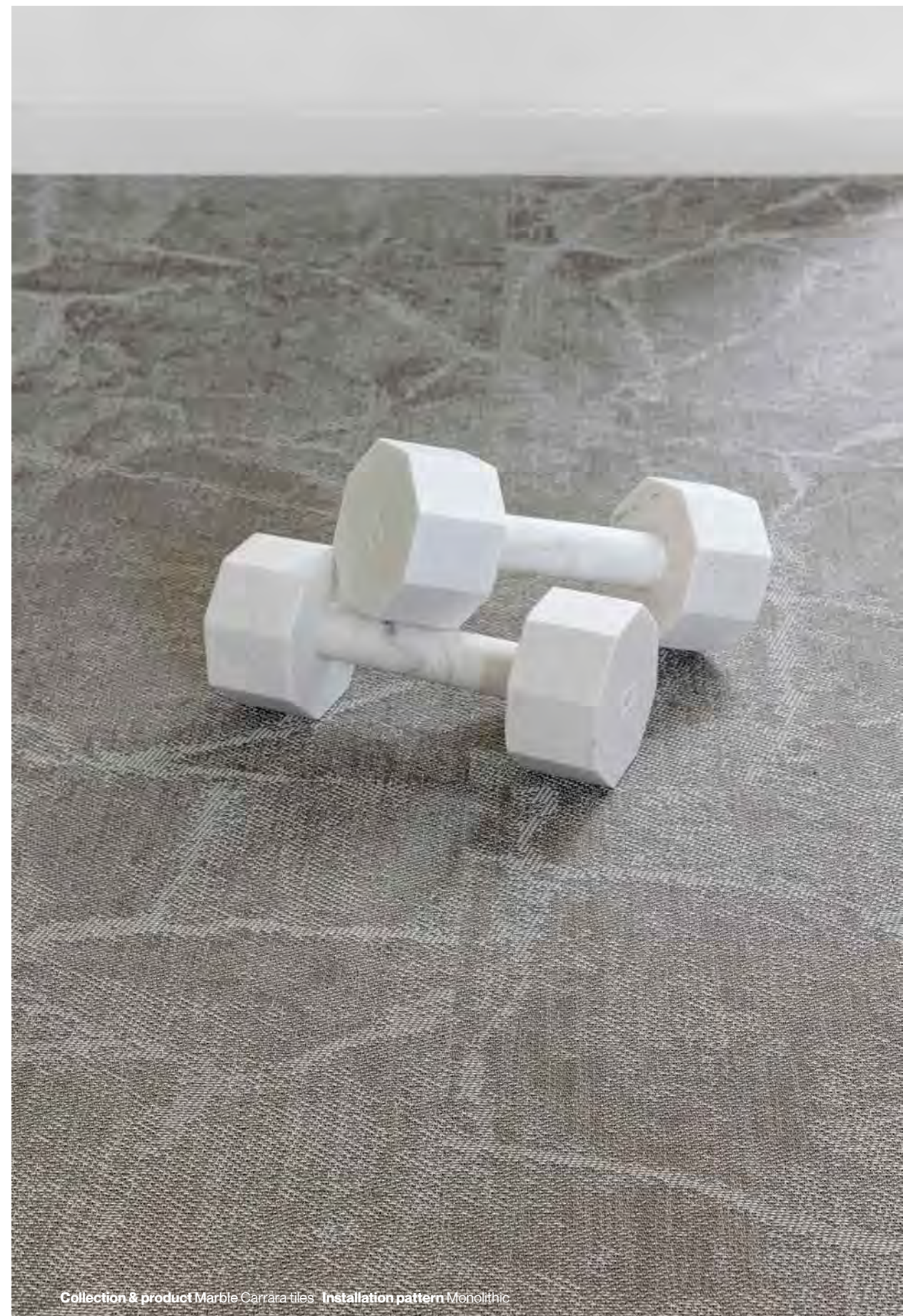
### Main features

- + Hygienic & easy to clean
- + Class 33 heavy usage
- + Acoustic sound absorption
- + Anti-allergic properties
- + Slip-resistant
- + Anti-fungi
- + Suitable for disinfection
- + Underfoot comfort
- + Anti-static properties
- + Long-lasting fresh appearance





Collection & product Colourful Aurora triangles & tiles + Infinite Black Hole triangles. Client Fjellspport (NO). Architect Into Design



Collection & product Marble Carrara tiles. Installation pattern Monolithic





Collection & product Strata Arkose planks Installation pattern Random Staggered A/B

## Timeless collections

Alhambra	—	73
Palma	—	79
Strata	—	85
Silva	—	95
Marble	—	101
Desert	—	105
Infinite	—	109
Hybrid	—	115
Colourful	—	121
Herringbone	—	125
Cracked Earth	—	125
Barcode	—	129
Stripes	—	129
Lustre	—	129
Play	—	134





Alhambra  
collection



# Alhambra

Inspired by the refined expression of beauty and emotion found within the well-known Moorish sun-soaked Alhambra palace, this pattern plays hide and seek with intricate mosaics and vegetal motifs.

The Arabic name 'al-Hamra' means 'the red fortress', celebrating nature's dance of light and sun on warm evenings. The colour palette varies from the azure hues of the Andalusian sky to the earthy warmth of sienna and umber tones in the surrounding hills. Celebrating the art of discovery, the Alhambra motif beckons with its delicate filigree of ornamental motifs and ever-unfolding details, inviting you on a journey of exploration and delight. Each glance reveals new intricacies, weaving together echoes of history and whispers of elegance.

Elevate your space with the Alhambra Collection and let the spirit of Moorish grandeur and exquisite craftsmanship adorn your interiors with grace and refinement.

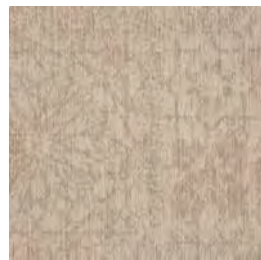
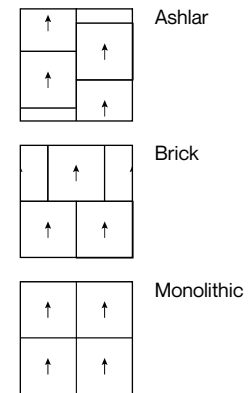
**Rolls**  
ca. 200 cm  
ca. 6'7"

**Tiles**  
50 x 50 cm  
19.69" x 19.69"

Seamless look

**Class 2**  
Bio-based  
SonoFelt™ 19dB

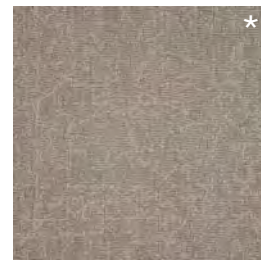
**Bio-Based**



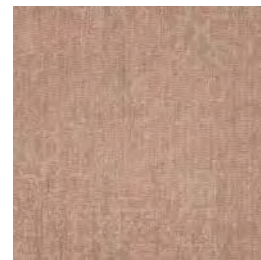
Alhambra Sand



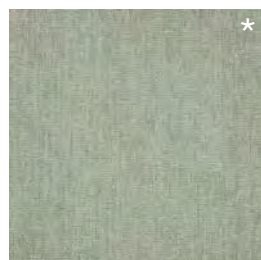
Alhambra Zinc



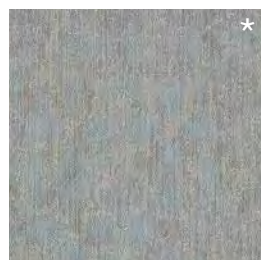
Alhambra Umber



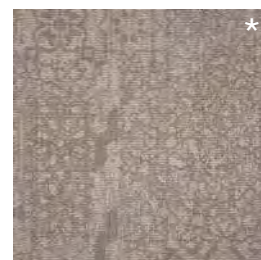
Alhambra Sienna



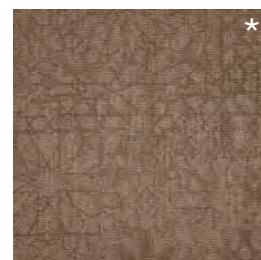
Alhambra Emerald



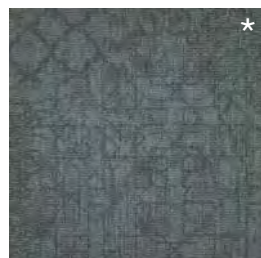
Alhambra Cyan



Alhambra Gunmetal



Alhambra Carmine

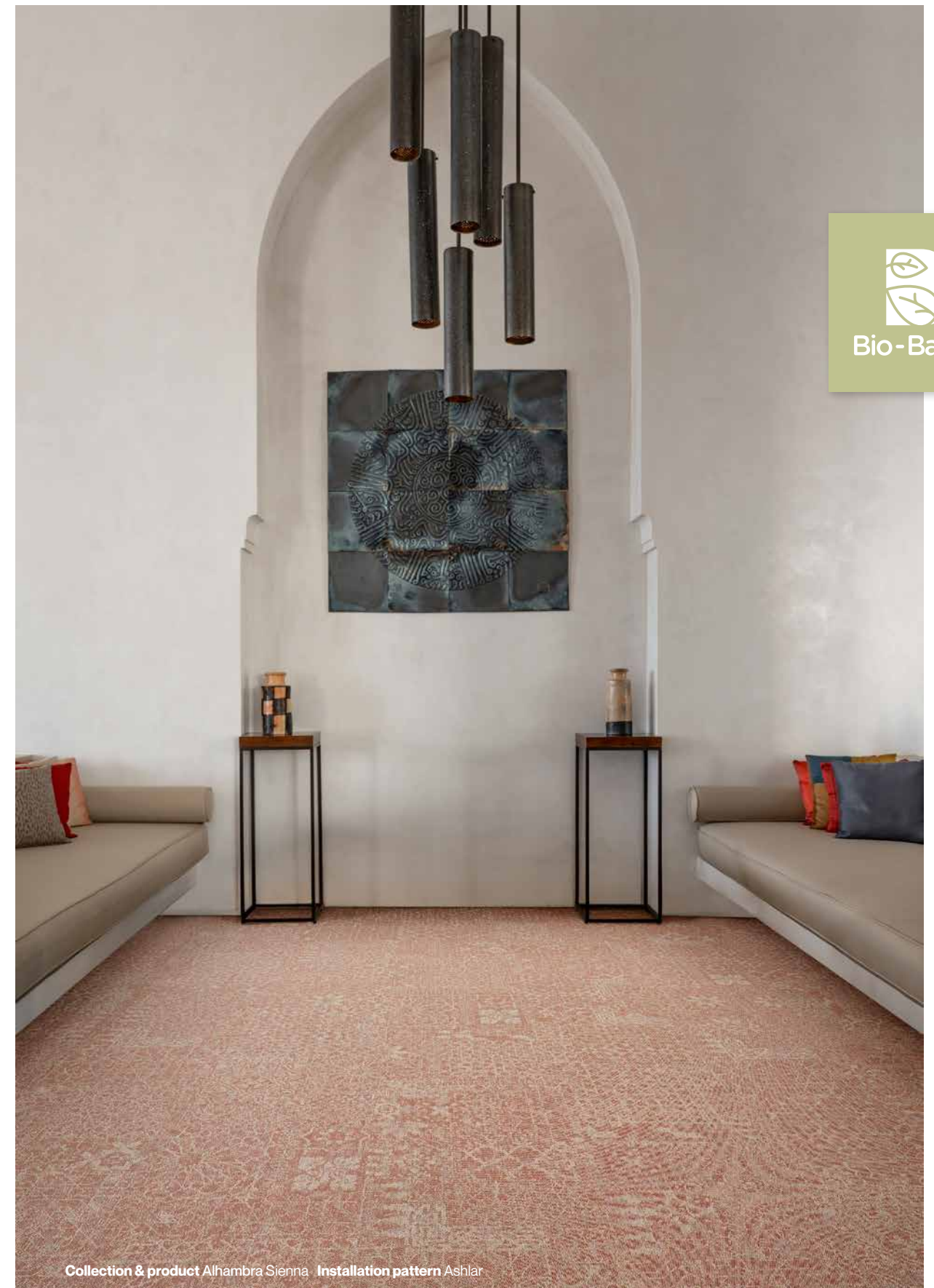


Alhambra Malachite



Alhambra Charcoal

\*Minimum order 200m<sup>2</sup> / 2000 ft<sup>2</sup>.



Collection & product Alhambra Sienna Installation pattern Ashlar





Collection & product Alhambra Emerald Installation pattern Ashlar



Collection & product Alhambra Umber Installation pattern Ashlar





Palma  
collection





2tec2<sup>®</sup>  
high tech flooring



# Palma

Embrace the serene oasis of palm tree leaves beneath your feet and let their gentle sway evoke a feeling of relaxation and sophistication.

The Palma Collection captures the essence of tropical elegance, bringing a sense of natural allure to any space. The Latin word “palma” holds a rich history and symbolism, originally referring to the palm of the hand as the key to life. Palm branches stood for victory and honour in ancient Rome. Over time, the palm tree became associated with peace, prosperity, and tropical paradise. Its graceful leaves and resilient nature have inspired artists and designers throughout the ages, carrying an exotic whisper of eternal life.

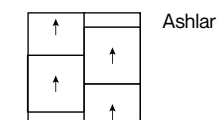
Palma exudes warm elegance, beauty, and tranquility, yet is at the same time vibrant and visually engaging. Create a lively space with this refined masterpiece design, crafted by nature.

Rolls  
ca. 200 cm  
ca. 6'7"

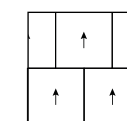
Tiles  
50 x 50 cm  
19.69" x 19.69"

Seamless look

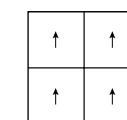
Class 2  
Bio-based  
SonoFelt™ 19dB



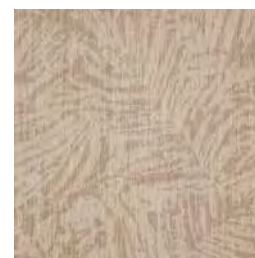
Ashlar



Brick



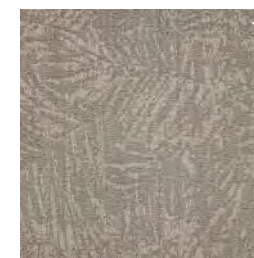
Monolithic



Palma Sand



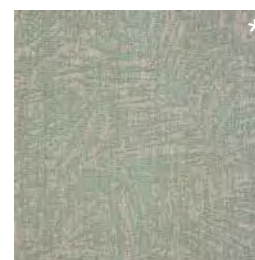
Palma Zinc



Palma Umber



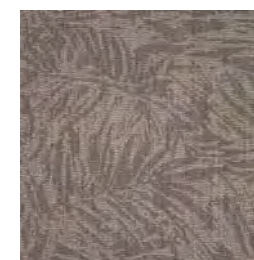
Palma Sienna



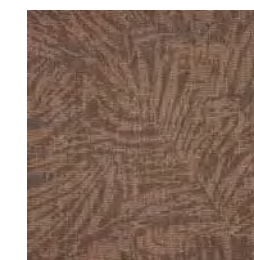
Palma Emerald



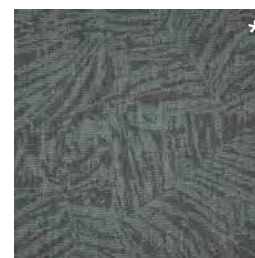
Palma Cyan



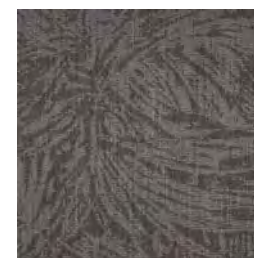
Palma Gunmetal



Palma Carmine



Palma Malachite



Palma Charcoal

\*Minimum order 200m<sup>2</sup> / 2000 ft<sup>2</sup>.



Palm tree  
leaves  
beneath  
your feet

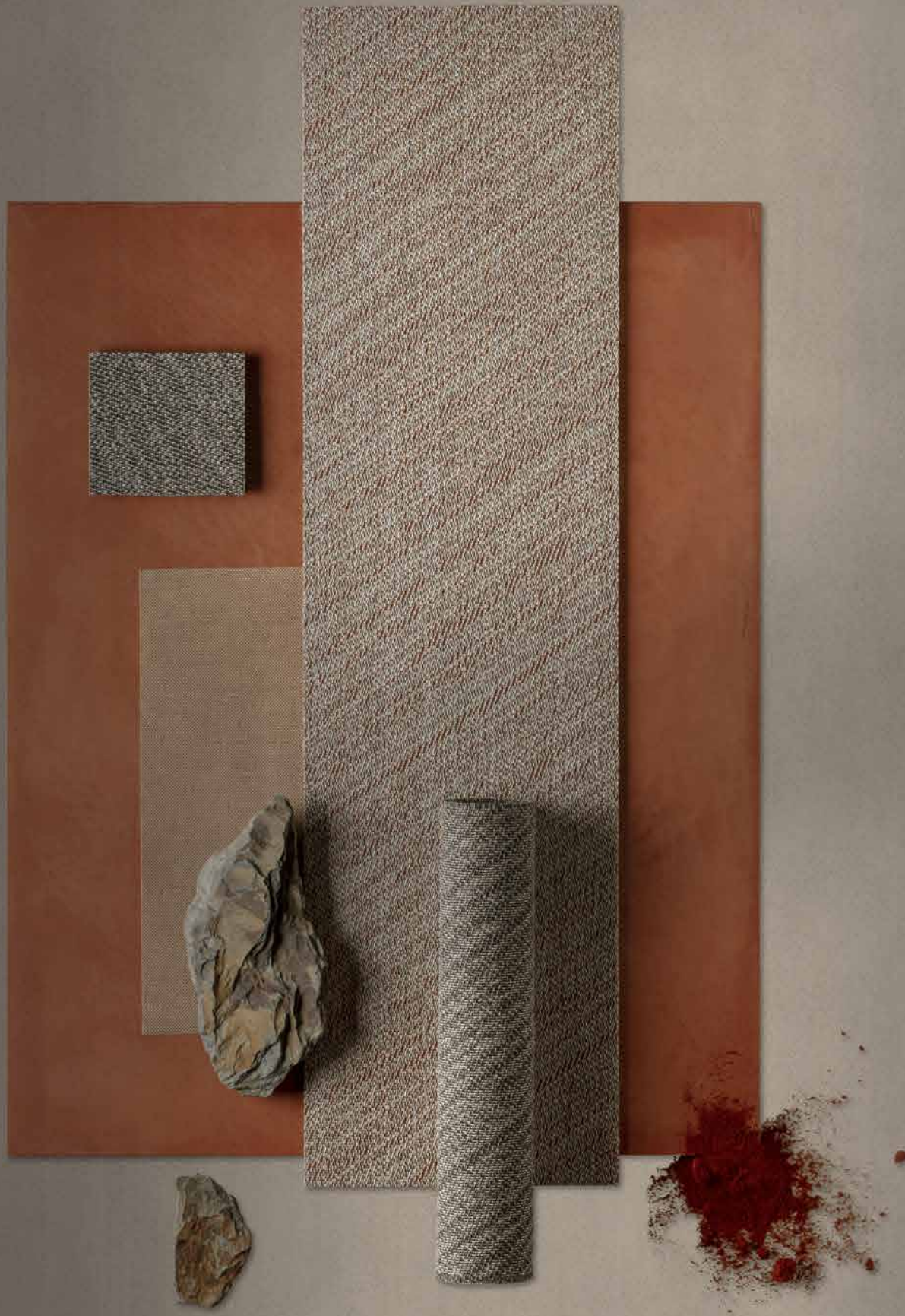


Collection & product Palma Charcoal tiles Installation pattern Ashlar



Collection & product Palma Zinc tiles Installation pattern Ashlar





Strata  
collection



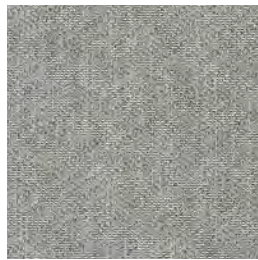
The layers of the earth serve as inspiration for the Strata collection into the design. As a silent witness to our evolution, the stratification in rocks and stones creates a robust play of lines – a symbol of timeless progress. Strata's line motif lives and breathes: with endless variation, the natural pattern creates fascinating markings on the floor.

# Strata INTILES

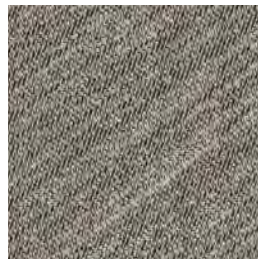
Strata's line motif lives and breathes: with endless variation, the natural pattern creates fascinating markings on the floor.



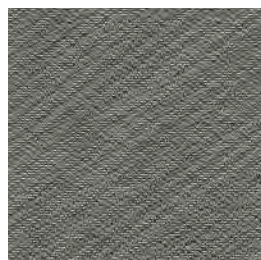
Silica



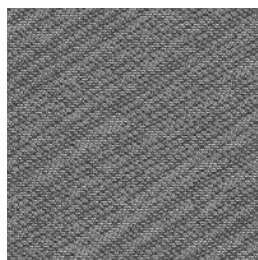
Chalk



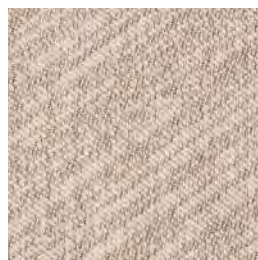
Arkose



Shale



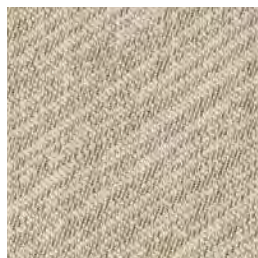
Coal



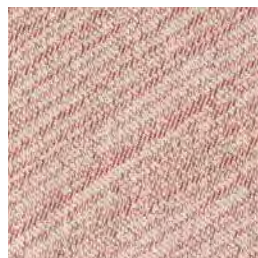
Pyrite



Azurite




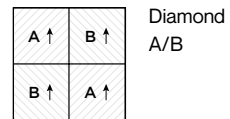
Serpentine



Garnet

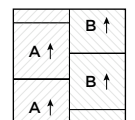
**Tiles**  
50 x 50 cm  
19.69" x 19.69"

Class 2  
Bio-based  
SonoFelt™ 19dB  Bio-Based



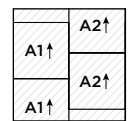
Diamond  
A/B

\* gives visually a diamond effect



Ashlar  
A/B

\* gives visually a herringbone effect



Ashlar  
A/A

\* gives visually a diagonal pattern



### Bio-based components

2TEC2 is proud to present you its first **bio-based collection**. We are replacing the compound formulation on the basis of fossil carbon for the pellets of which our 2TEC2 yarns are made, with a plant-based formula. As such we are replacing the finite fossil carbon in our yarns with these innovative plant-based raw materials. Thanks to this step, the woven top layer contains **renewable materials**, making your flooring more sustainable.



# Strata tiles installation possibilities

To create the **Strata herringbone floor patterns**, you need to **order 50% of the A tiles** with the upward line design and **50% of the B tiles** with the descending line design.  
To create a diagonal floor pattern, you can order only A (or B) tiles.

## ASHLAR A/B

Create a 100 cm (39.37") wide **herringbone** pattern by arranging the tiles in opposing directions.

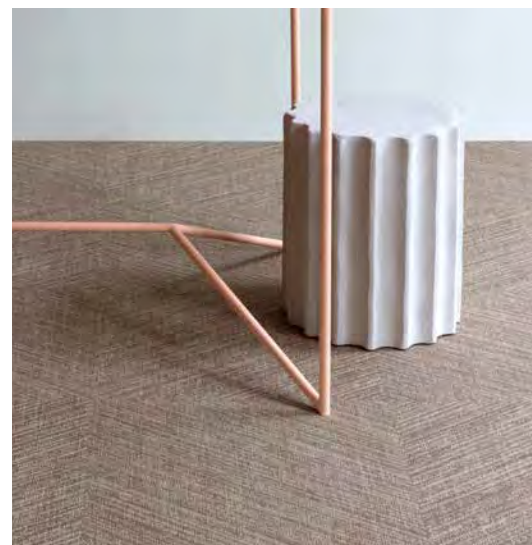
\* gives a herringbone effect



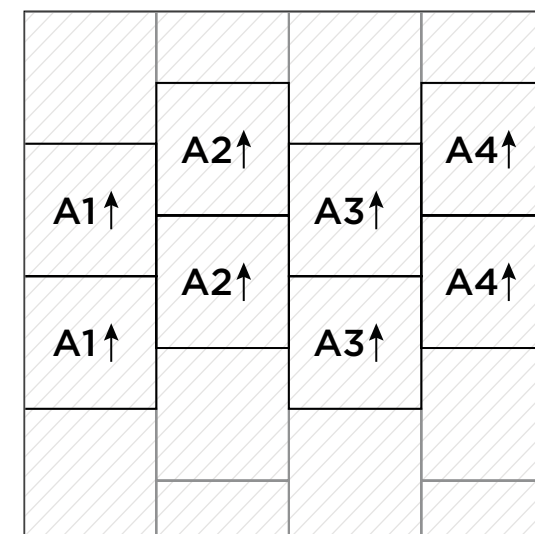
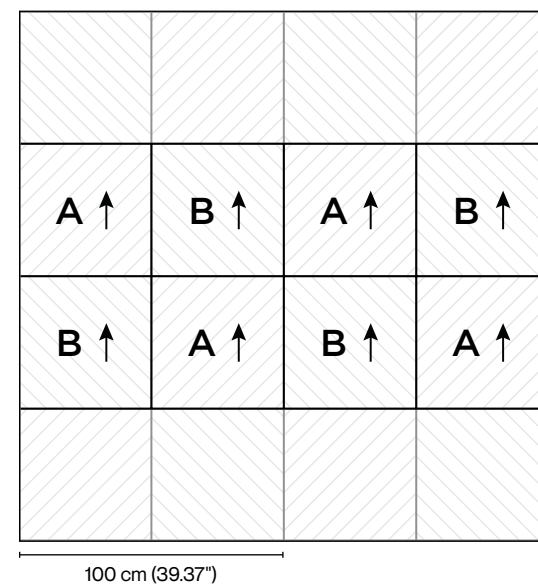
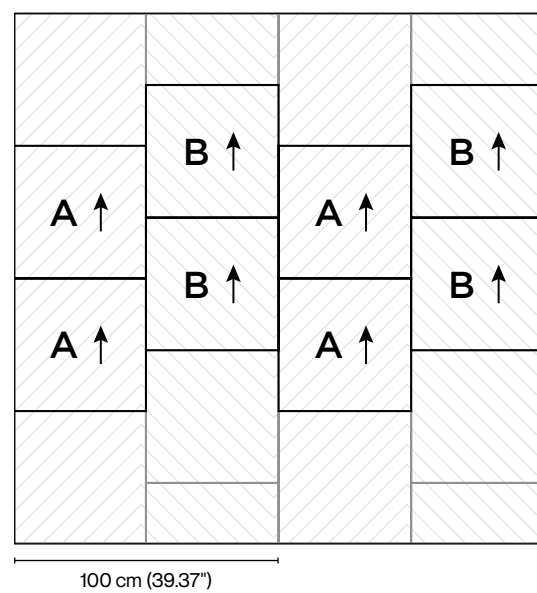
## DIAMOND A/B

Create a 100 cm (39.37") wide **diamond** pattern by arranging the tiles in alternating directions.

\* gives a diamond shaped effect



Collection & product Strata Pyrite tiles



## ASHLAR A/A

Create a 100 cm (39.37") wide **diagonal** pattern by arranging the tiles in opposing directions.

- \* gives a diagonal effect
- \* only A tiles or only B tiles
- \* also possible with A or B planks

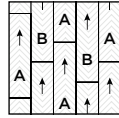




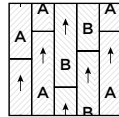
# Strata IN PLANKS

Strata's line motif lives and breathes: with endless variation, the natural pattern creates fascinating markings on the floor.

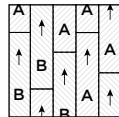
Planks  
20 x 75 cm  
7.87" x 29.53"



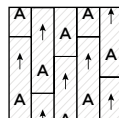
Random  
Staggered  
A/B



Random  
Staggered  
AA/BB



Random  
Staggered  
Mix A/B



Random  
Staggered  
A/A



Silica Chalk Arkose Shale



Coal Pyrite Azurite Serpentine Garnet

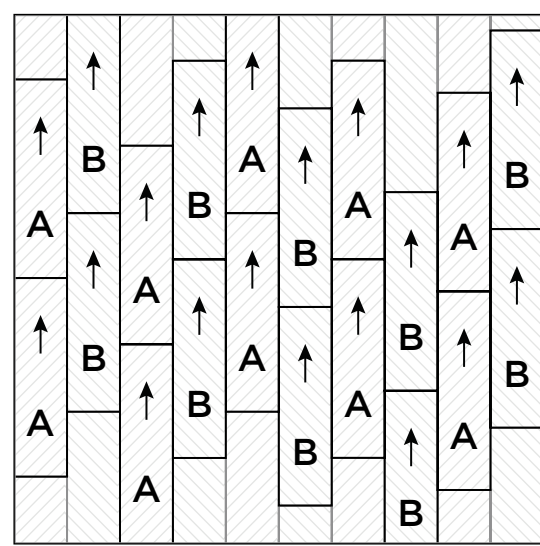


# Strata planks installation possibilities

To create the **Strata floor patterns**, you need to order **50% of the A tiles** with the upward line design and **50% of the B tiles** with the descending line design. To create a diagonal floor pattern, you can order only A (or B) planks.

## RANDOM STAGGERED A/B

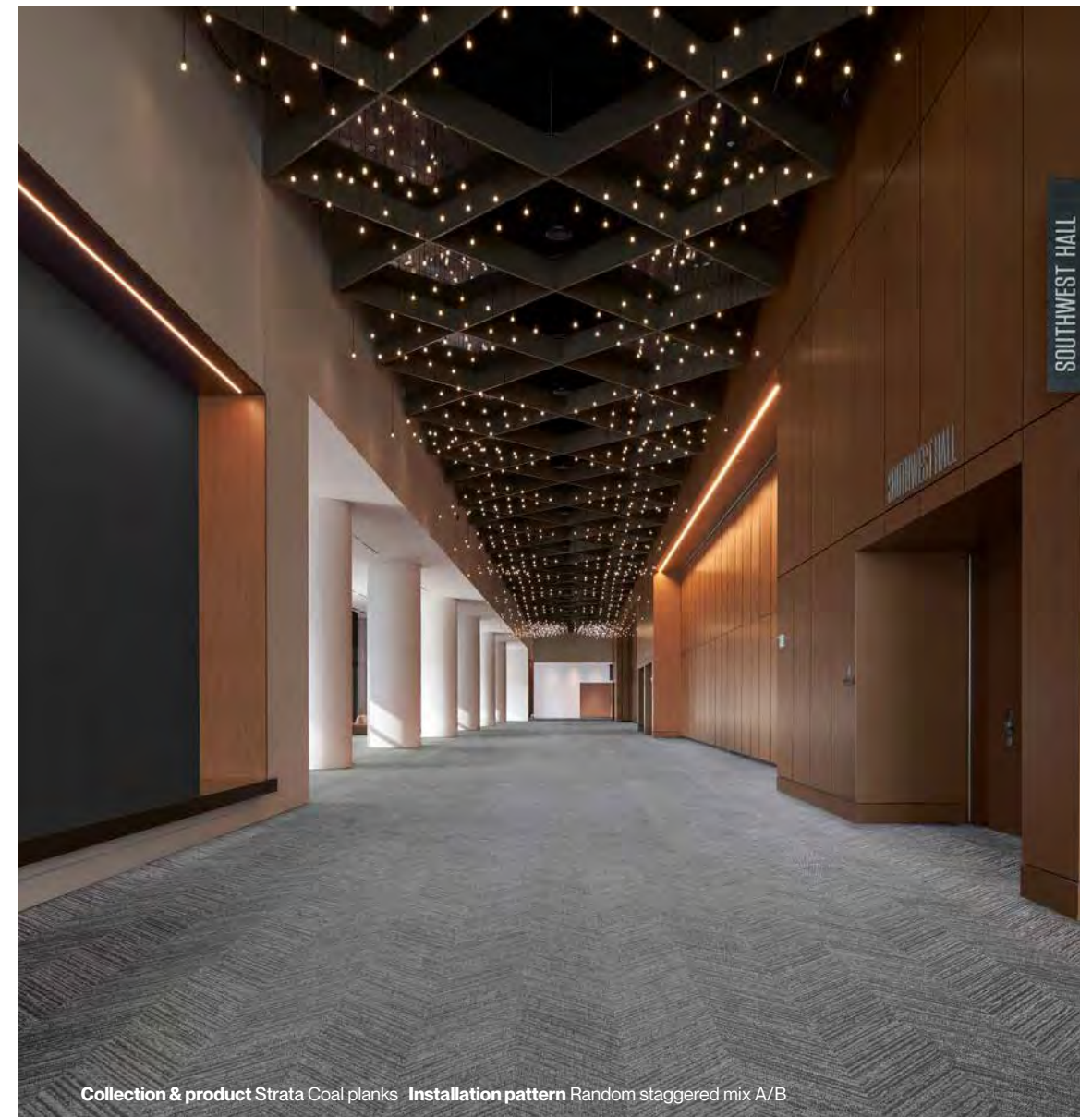
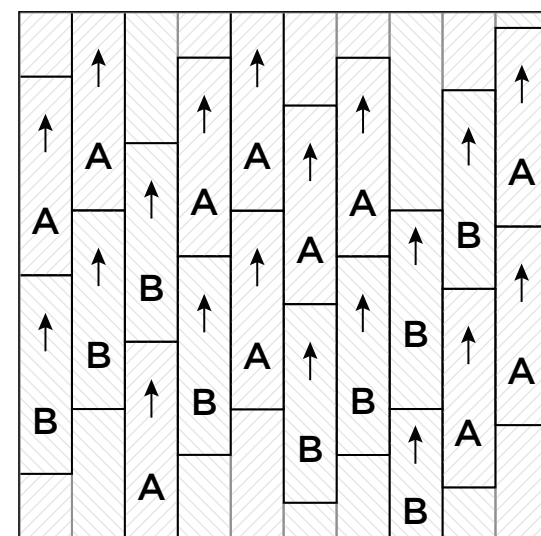
Create a 40 cm (15.75") wide herringbone pattern by arranging the planks in opposing directions.



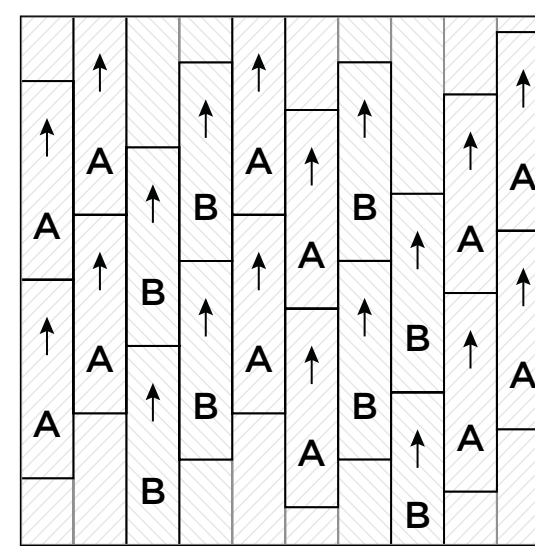
40 cm (15.75")

## RANDOM STAGGERED MIX A/B

Create a randomised design.



Collection & product Strata Coal planks Installation pattern Random staggered mix A/B



80 cm (31.50")

## RANDOM STAGGERED AA/BB

Create a 80 cm (31.50") wide herringbone pattern by arranging the planks in opposing pairs, extending the pattern.





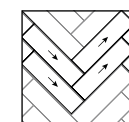


Silva  
collection

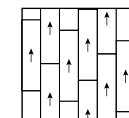




**Planks**  
20 x 75 cm  
7.87" x 29.53"



Herringbone



Random  
Staggered

# Silva

Silva is the Latin name for 'wood' or 'forest', and this perfectly epitomises this floor covering. With a single step you are transported to beautiful woodlands, where the branches sway to the rhythm of the breeze and create a unique play of shadows.



Ash

Maple

Olive



Meranti

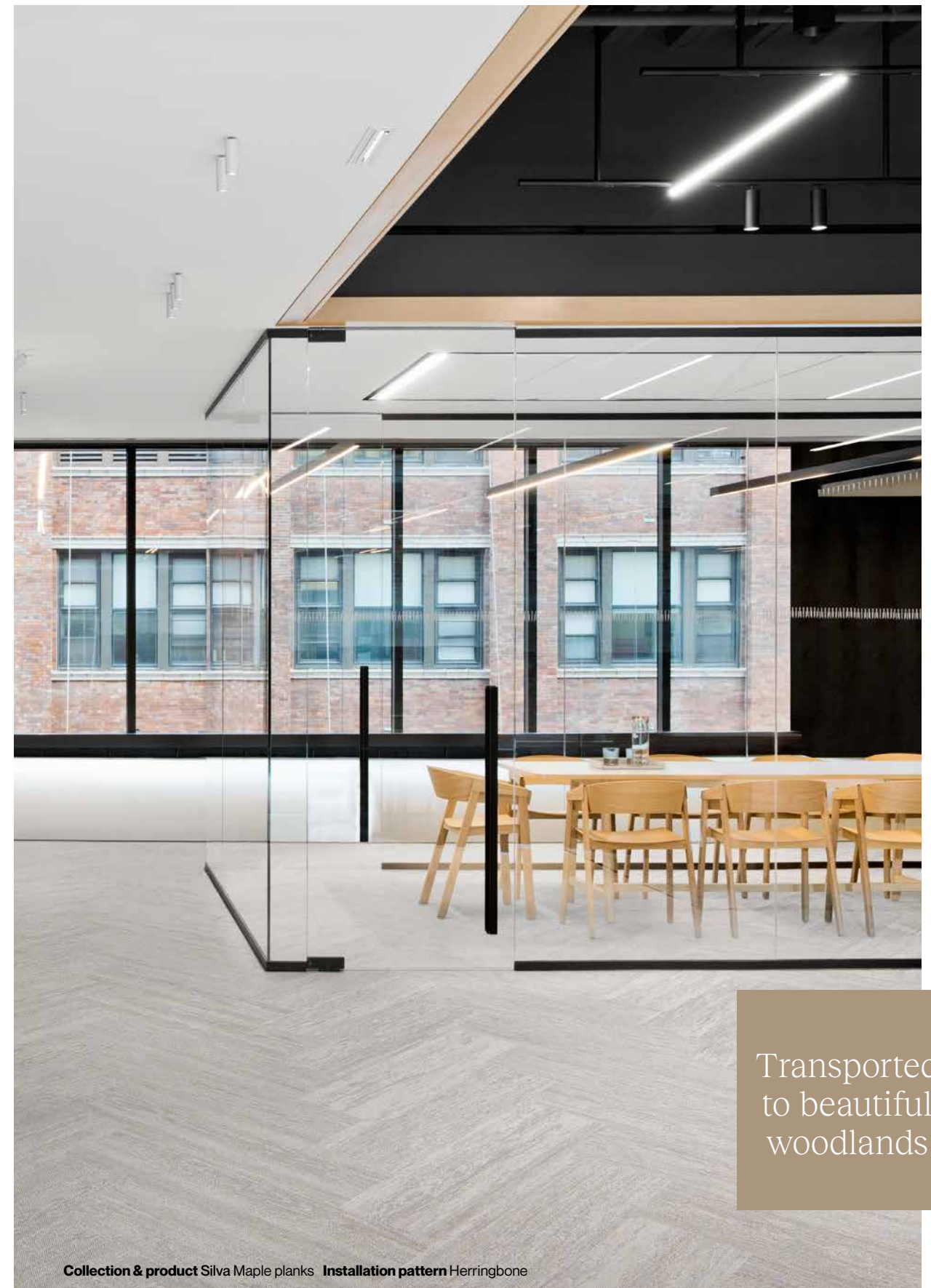
Teak

Ebony





Collection & product Silva Ash planks Installation pattern (Random staggered)



Transported  
to beautiful  
woodlands

Collection & product Silva Maple planks Installation pattern Herringbone





Marble  
collection

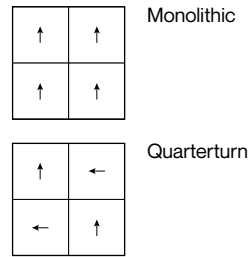


# Marble

Eminent, regal, and everlasting. These words come to mind when viewing our Marble collection. This collection is inspired by the crystalline material that has been used to build impressive palace halls and acted as the canvas for breathtaking monuments throughout the ages. Each design features the wild, yet purposeful streaks of colour that are unique to its namesake, echoing the controlled chaos that can only come from nature's own design.

**Tiles**  
50 x 50 cm  
19.69" x 19.69"

**Rolls**  
200 cm wide  
6'7" wide



Carrara



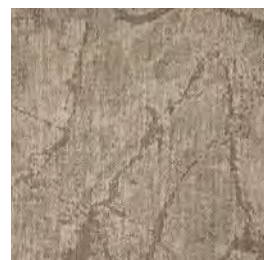
Fior



Aliveri



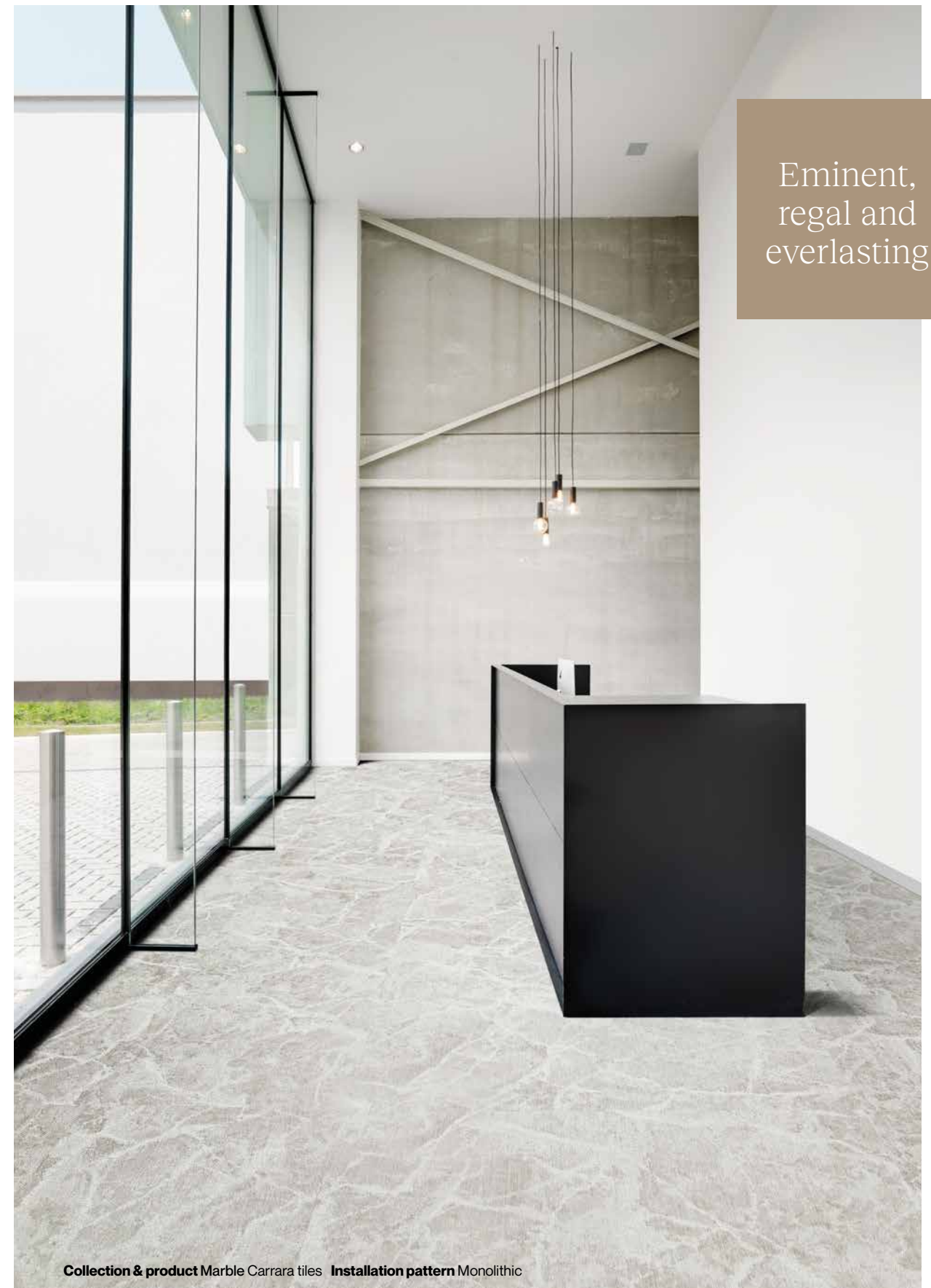
Portoro



Triana



Emperador



Eminent,  
regal and  
everlasting

Collection & product Marble Carrara tiles Installation pattern Monolithic





Desert  
collection

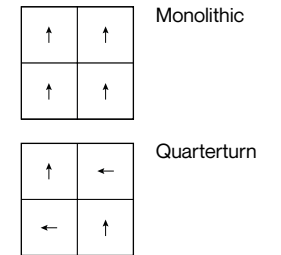




Collection & product Desert Gobi tiles Installation pattern Monolithic

**Tiles**  
50 x 50 cm  
19.69" x 19.69"

**Rolls**  
200 cm wide  
6'7" wide



## Desert

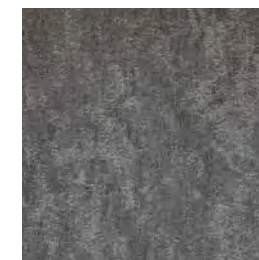
The Desert collection pays homage to the awe-inspiring stretches of arid wasteland that blanket our planet. Though the pattern may appear simple, just like the terrain its named for, each piece is made of a unique and vibrant ecosystem, which creates an impressive, everlasting impression.



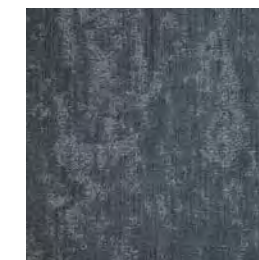
Farafra



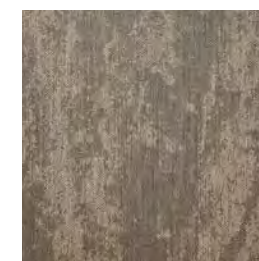
Antarctic



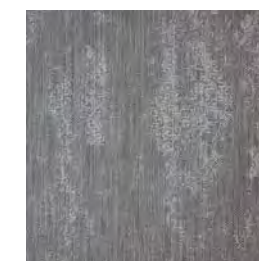
Hoyos



Karakum

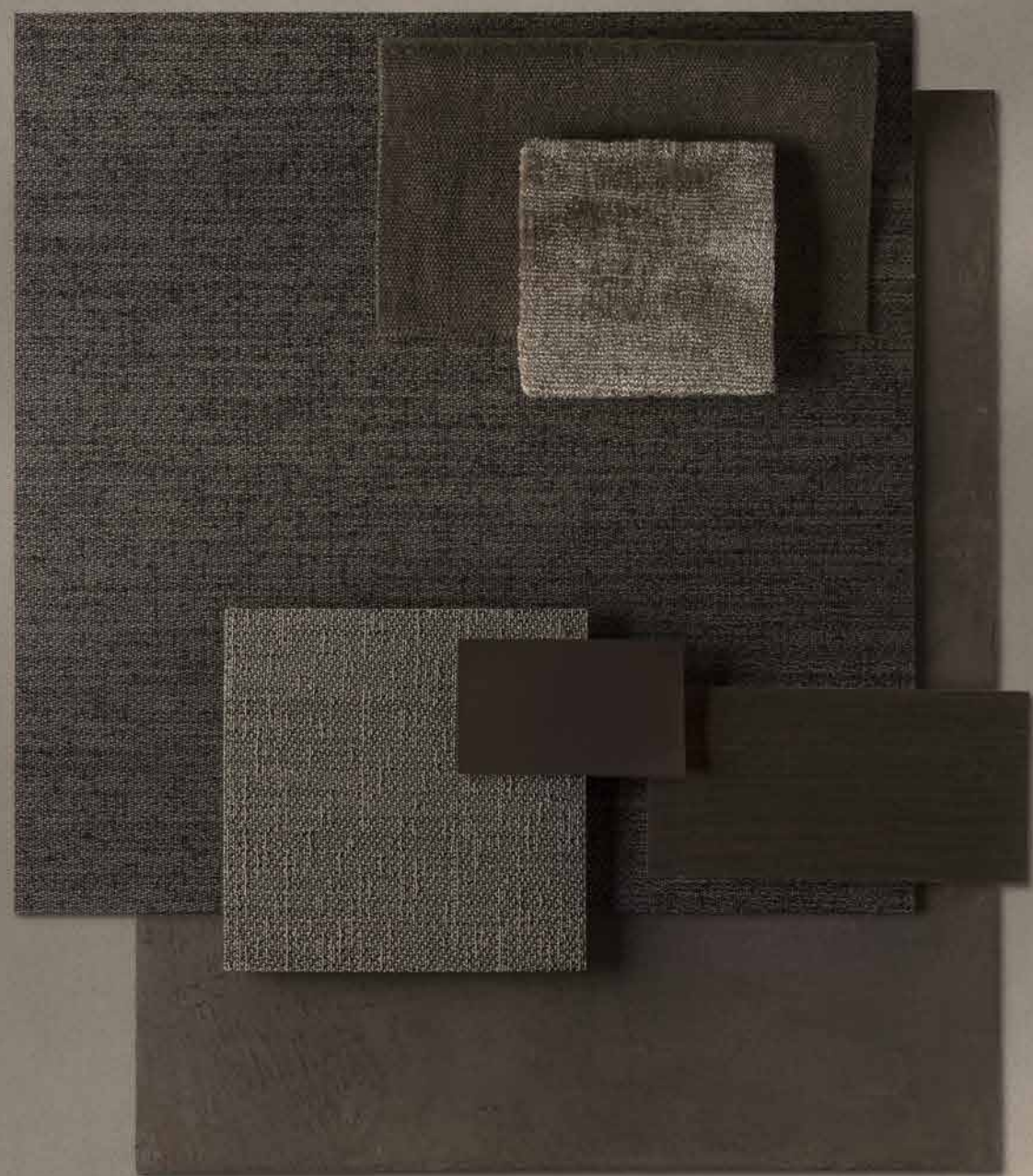


Gobi



Namib





Infinite  
collection



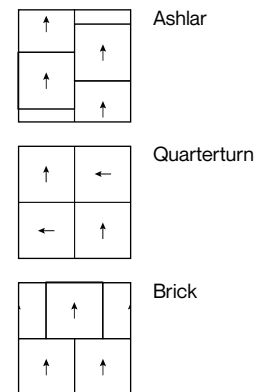
# Infinite

Our Infinite collection is inspired by the mysteries beyond our planet. Looking upwards, we sought to bring the beauty and awe of the night sky, and the celestial bodies that inhabit it, down beneath your feet. Named after the cosmic figures of our universe, each of the pieces in this collection expresses limitless power.

**Tiles** 50 x 50 cm  
19.69" x 19.69"

**Rolls** 200 cm wide  
6'7" wide

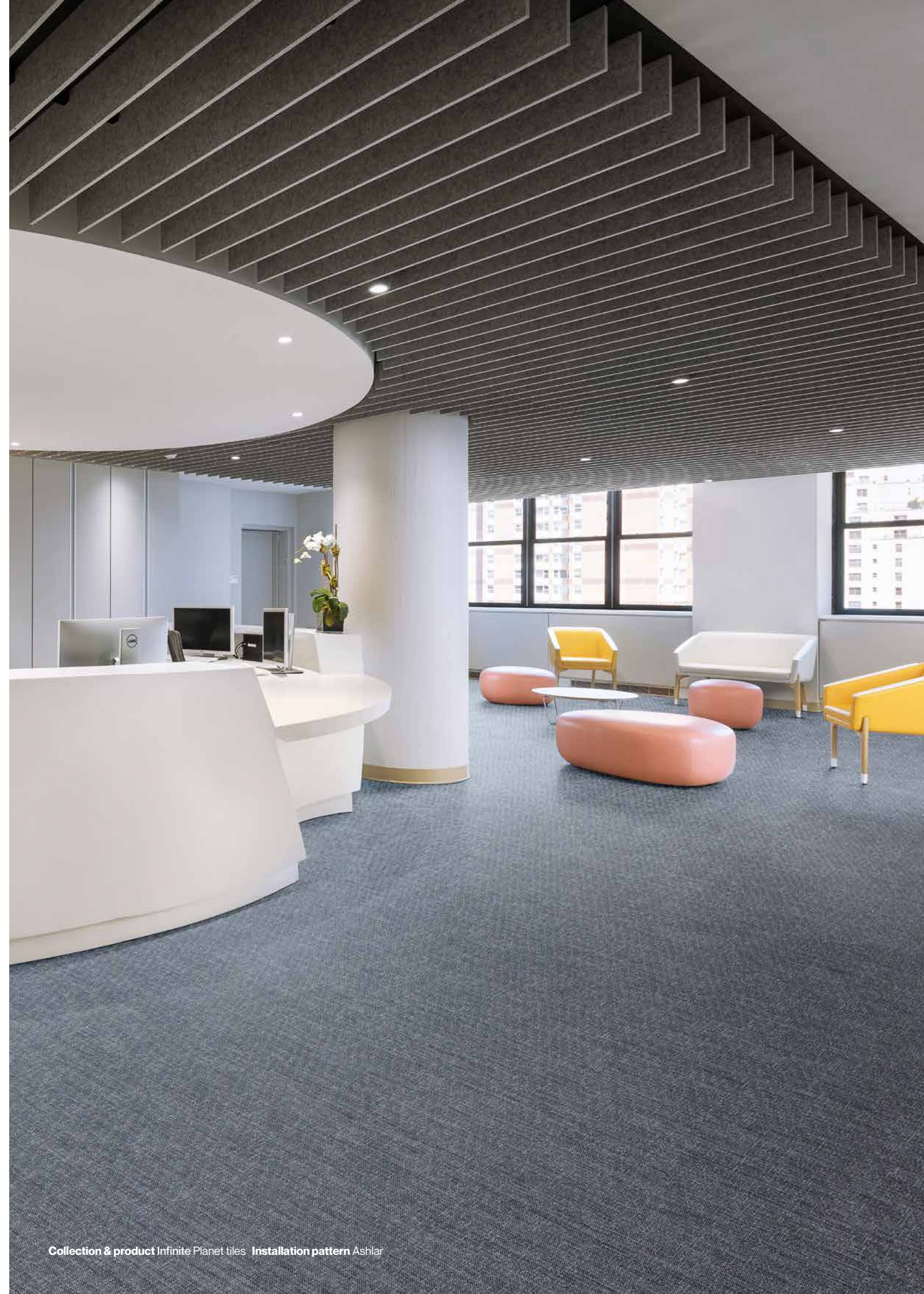
**Seamless look**



The  
mysteries  
beyond our  
planet

Collection & product Infinite Moonrock tiles Installation pattern Ashlar





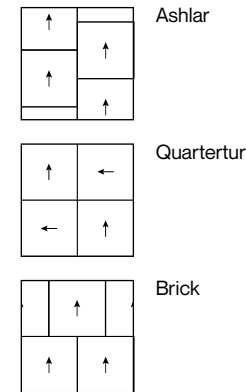




Hybrid  
collection



**Seamless look**



# Hybrid

The Hybrid collection is inspired by the biophilic design philosophy. Biophilia is the inborn need people possess for contact with nature which is essential to their physical and mental health, productivity and well-being. Satisfying this need for contact with nature in the modern built environment is something called biophilic design.



Collection & product Hybrid Rosetta tiles Installation pattern Ashlar







Collection & product Hybrid Darkside tiles Installation pattern Ashlar Client ING Cedar (NL) Architect HofmanDujardin Architects



Inborn  
contact with  
nature

Collection & product Hybrid Helios tiles Installation pattern Ashlar  
Client Voka - O'Forty (BE) Architect Stay Studio & Architecten Group III





Colourful  
collection



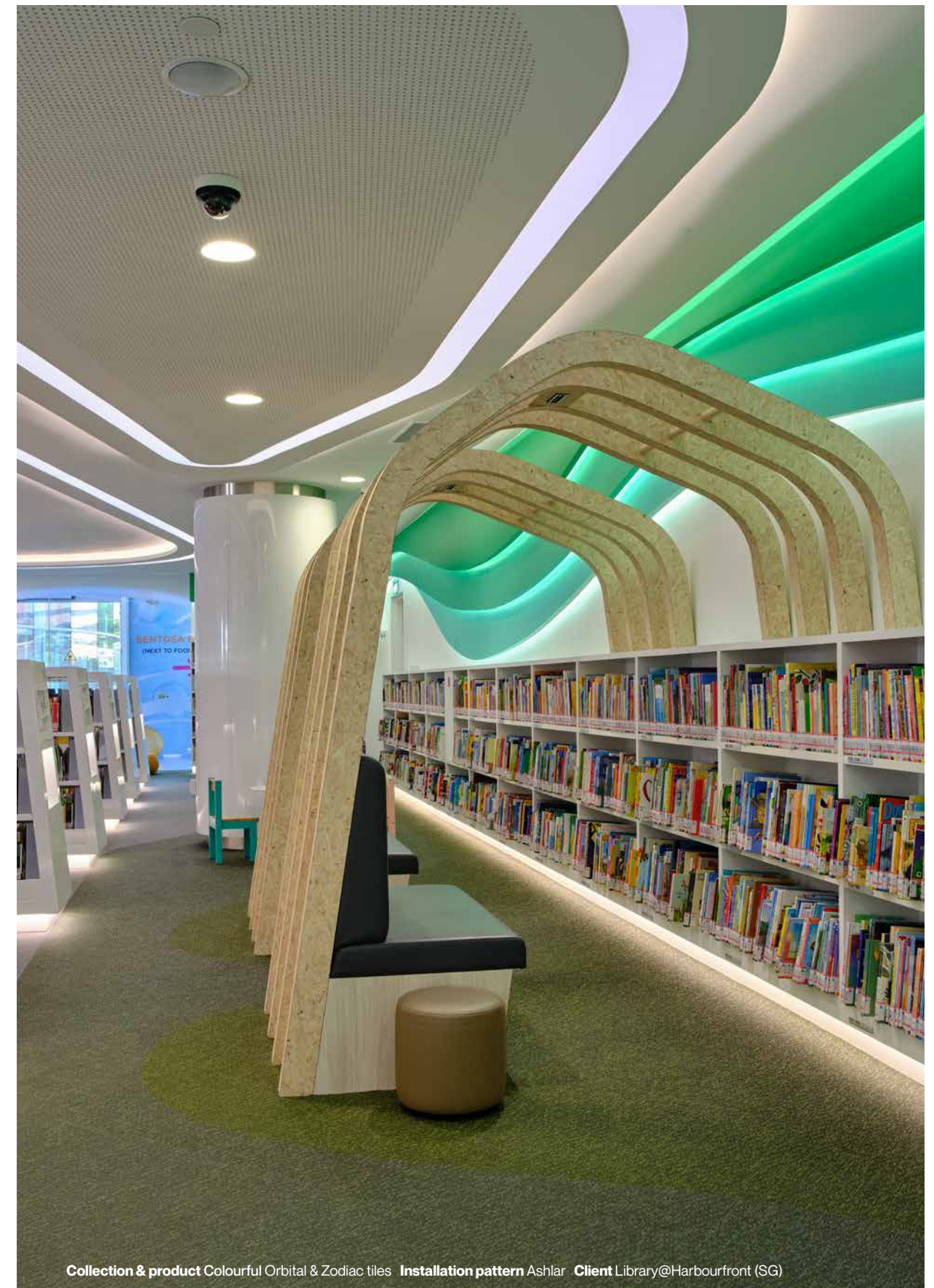
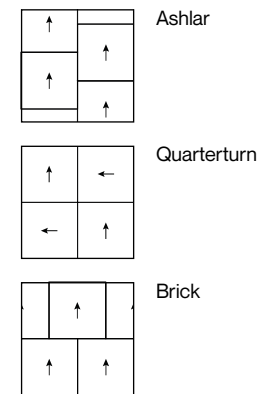
# Colourful

Our Colourful collection is a complex combination of hues and tints to breathe life into your flooring. Each of our shades is inspired by powerful forces of nature, vivid expressions of strength, from the bright tail of an asteroid streaking across a midnight sky to the magnificent undulations of the Aurora Borealis, to the flickering ferocity of fire. With a darker base undertone, each pattern is flecked with lighter shades, creating a complex visual.

**Tiles** 50 x 50 cm  
19.69" x 19.69"

**Rolls** 200 cm wide  
6'7" wide

**Seamless look**



Collection & product Colourful Orbital & Zodiac tiles Installation pattern Ashlar Client Library@Harbourfront (SG)





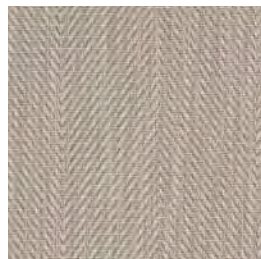
Herringbone  
& Cracked earth  
collection



# Herringbone

Herringbone is influenced by the sharp, V-shaped patterns found in the delicate fossils of the marine animals after which this pattern is named. Just like the biological structure it is inspired by, the Herringbone pattern acts as the unyielding, skeletal framework for your room, upon which you can build the rest of your interior design. While using the same colour, the alternating columns in this design give the curious appearance of two distinct shades when viewed from afar.

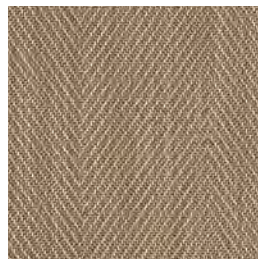
**Rolls**  
200 cm wide  
6'7" wide



Oyster



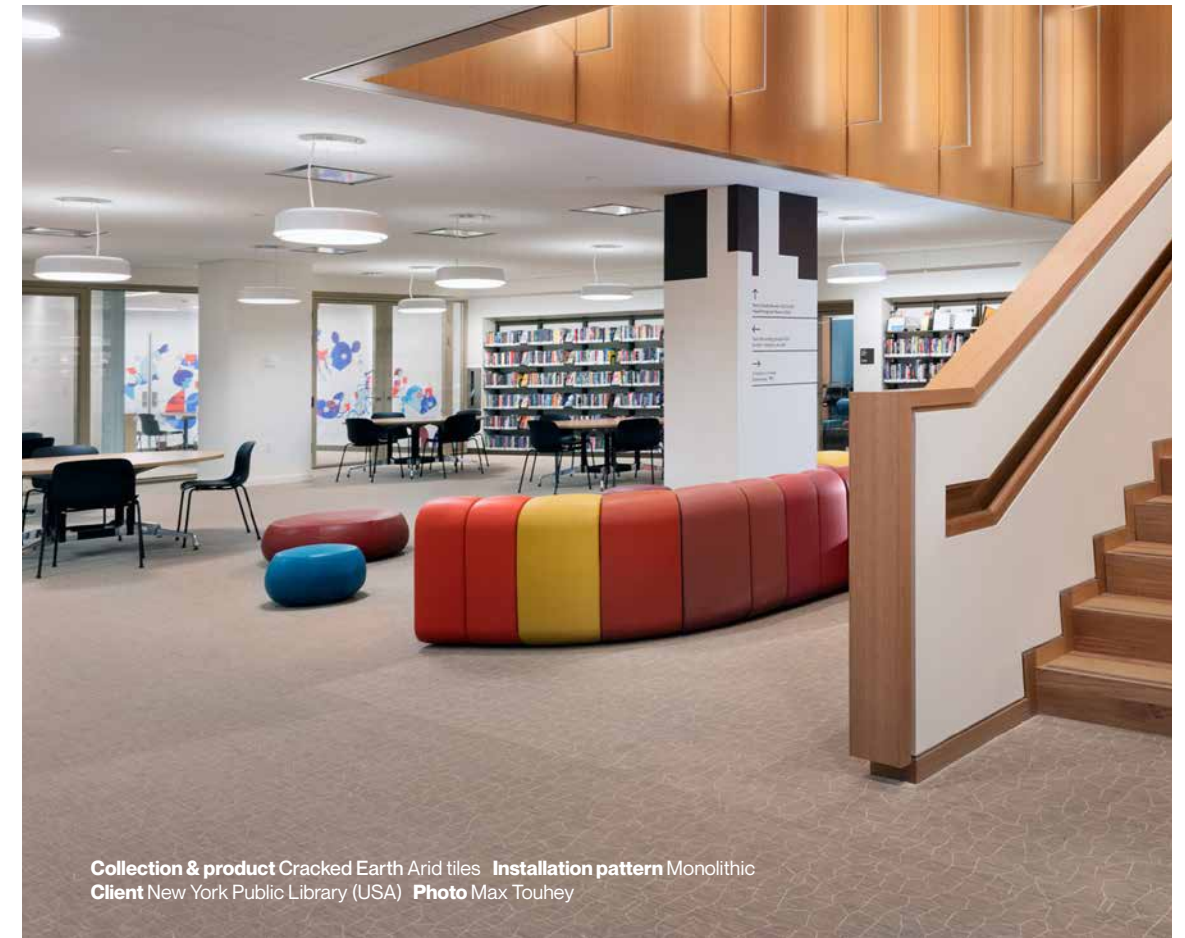
Sandstone



Dune



Collection & product Herringbone Oyster rolls Client Schuhe Lücke (DE)

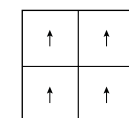


Collection & product Cracked Earth Arid tiles Installation pattern Monolithic  
Client New York Public Library (USA) Photo Max Touhey

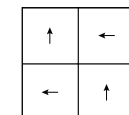
**Tiles**  
50 x 50 cm  
19.69" x 19.69"

**Rolls**  
200 cm wide  
6'7" wide

Seamless look



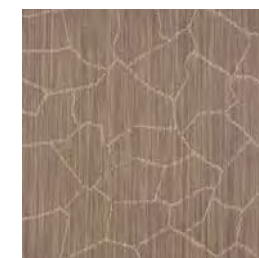
Monolithic



Quarterturn

# Cracked Earth

Cracked Earth tells a story of the earth's resilience to the elements as it weathers the onslaught of passing millennia. Inspired by the arid landscapes on our planet subject to the unforgiving power of volcanic activity, this collection reminds occupants of the unique grandeur that comes with age. The cracked lines featured in this collection are striking and powerful, exhibiting the raw strength of time, and the earth's obstinance against it.



Arid





Barcode,  
Stripes & Lustre  
collection



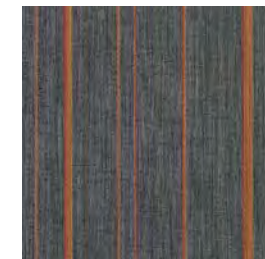
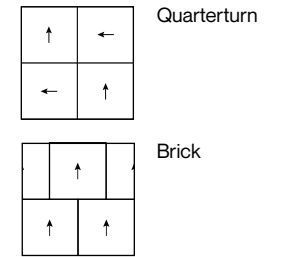


# Stripes

Stripes utilises streaks of spirited colour to inject your space with life and excitement. Bright blue or orange lines against a dark base, the streaks of dye are an eye-catching accent piece to match the colour tones that define your room. A combination of thick and thin lines offers a textured appearance to the floor.

**Tiles**  
50 x 50 cm  
19.69" x 19.69"

**Rolls**  
200 cm wide  
6'7" wide



Moonless Night Orange



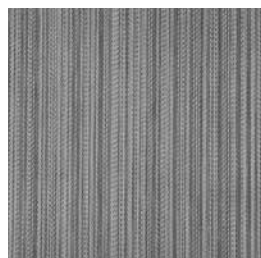
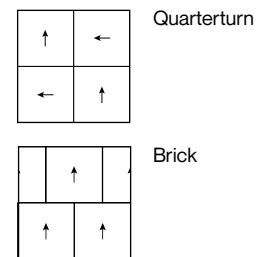
Moonless Night Blue

# Barcode

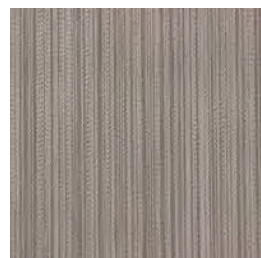
The Barcode collection uses shading and geometric techniques to create an illusion of movement along its surface. Harmonizing both dark and light, this pattern evokes serenity, reflecting the first rays of a rising sun. Looking closely, one can see the barcodes are constructed through asymmetrical, linear weaves which, when stepping back, gives off an illustrious perspective.

**Tiles**  
50 x 50 cm  
19.69" x 19.69"

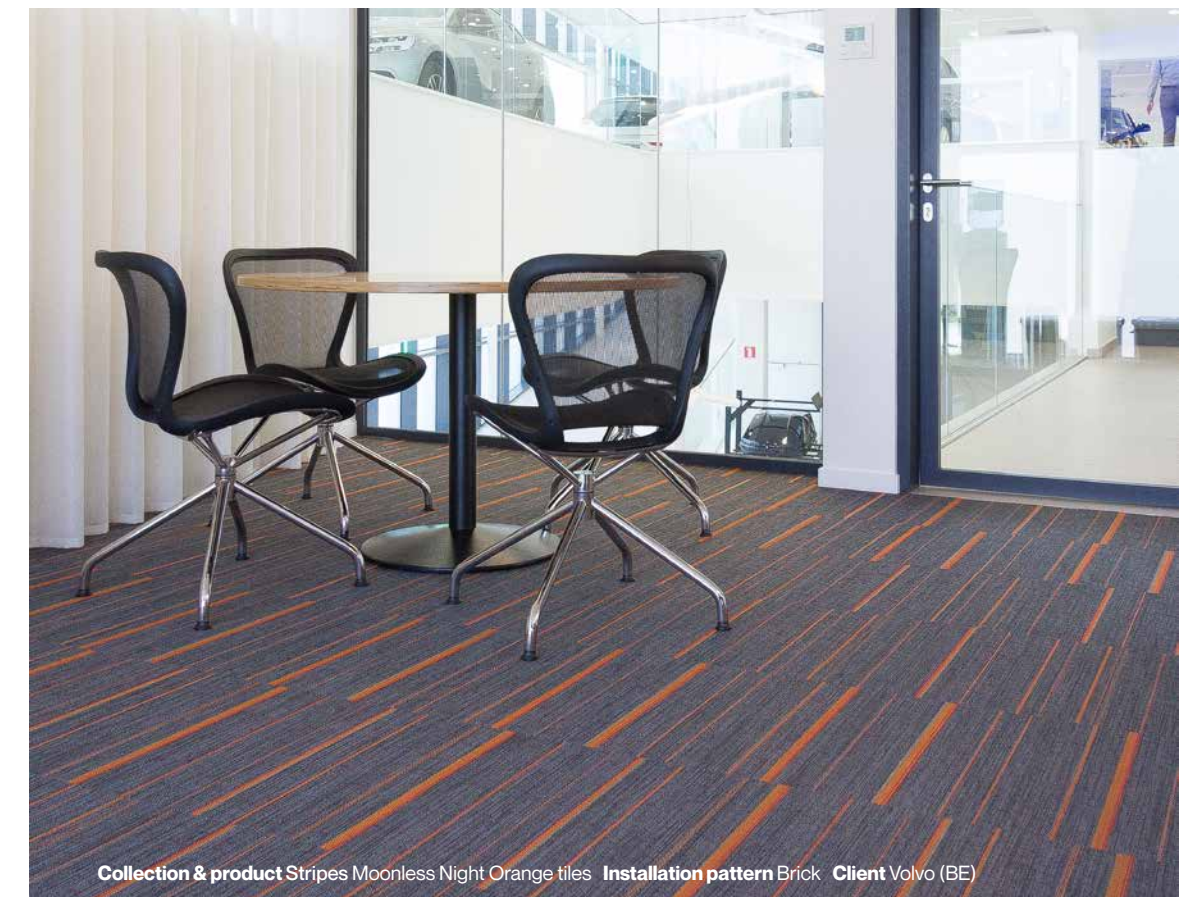
**Rolls**  
200 cm wide  
6'7" wide



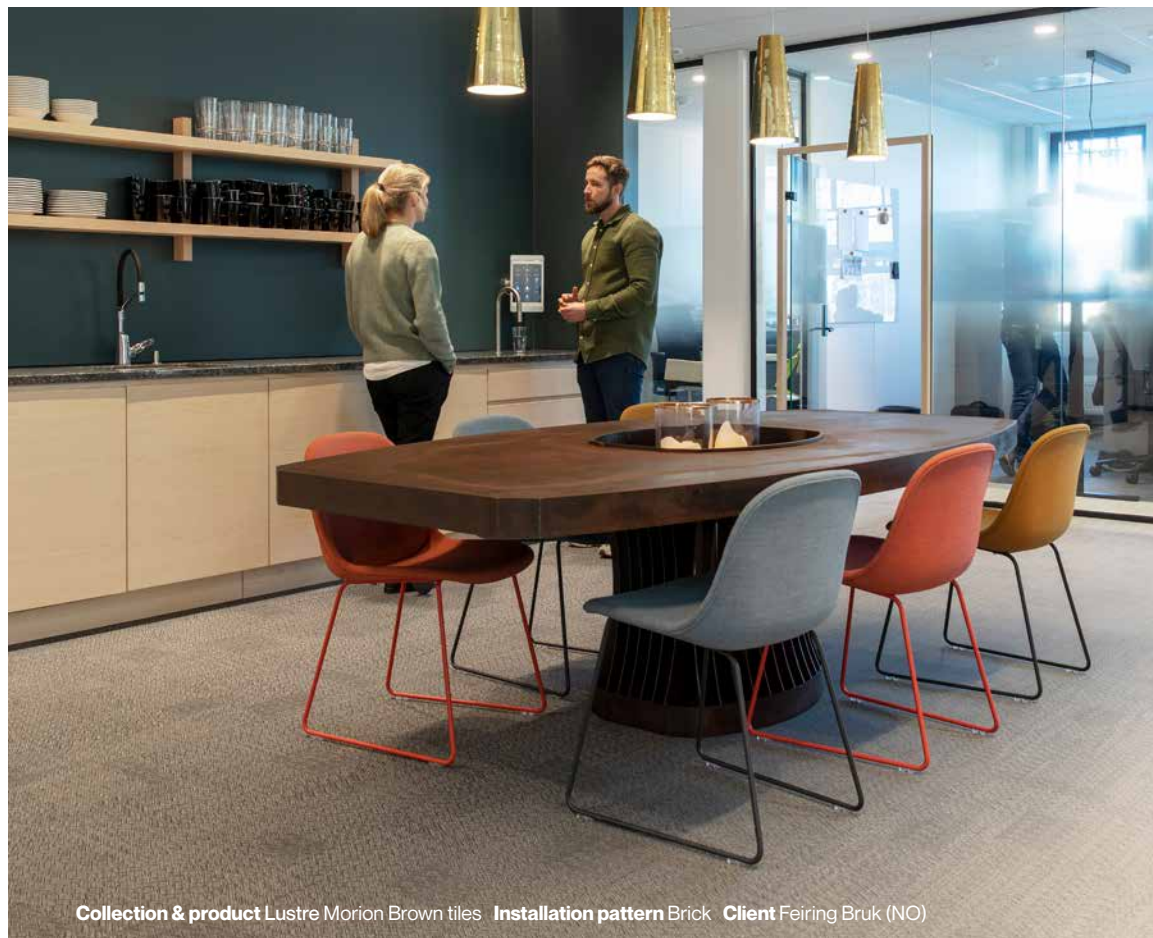
Diamond



Quartz







Collection & product Lustre Morion Brown tiles Installation pattern Brick Client Feiring Bruk (NO)

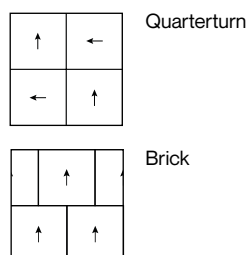
# Lustre

The Lustre collection is influenced by the entrancing, crystalline patterns found in the geometric shapes of natural stone formations. Like its name suggests, the Lustre patterns reflect the light within your space to create a gentle, yet eye-catching visual experience that will mesmerise your occupants from the moment they walk through your doors.

**Tiles**  
50 x 50 cm  
19.69" x 19.69"

**Rolls**  
200 cm wide  
6'7" wide

**Seamless look**



Magnetite Grey



Morion Brown



Collection & product Lustre Magnetite Grey tiles Installation pattern Brick Client DEI (BE)



# PLAY

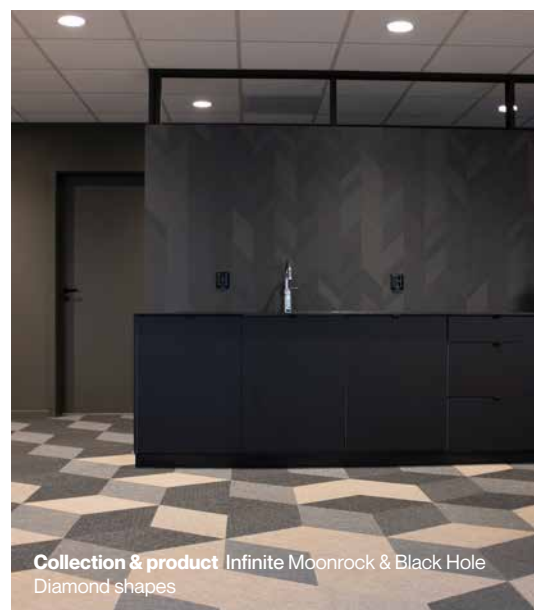
## LET YOUR CREATIVITY FLOW

Your floors should mirror the unique personality of your space. Our vast library of shapes, colours, and patterns offers a nearly limitless number of combinations for you to choose from, guaranteeing you will find a solution that perfectly embodies the spirit of your project.

To make your bespoke project a success, contact our sales team to work out a custom-made floor solution.



Collection & product Infinite Flintino planks



Collection & product Infinite Moonrock & Black Hole  
Diamond shapes

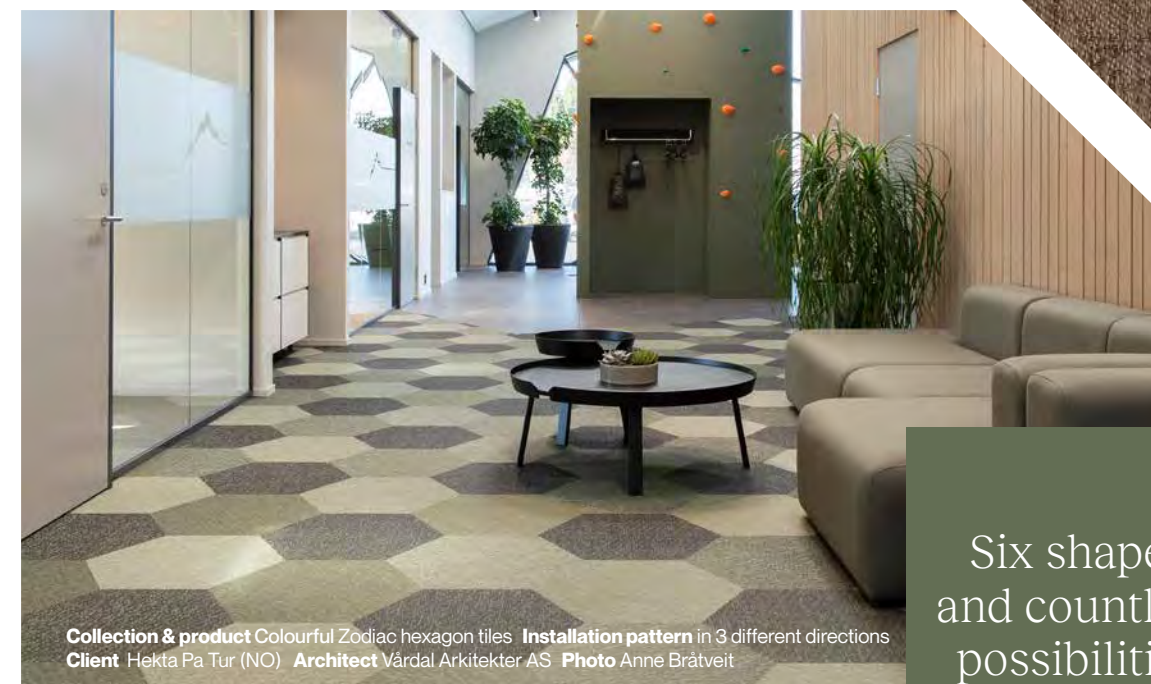


Collection & product Infinite Black Hole  
+ Colourful Quasar & Zodiac Triangles

We can also design **new colours and patterns or logos** for your important projects.

## DESIGNED FOR FUN

Our Play concept allows you to get creative with various shapes of tiles and planks to create inspiringly expressive floors. Diamonds, hexagons and planks are among some of our suggestions. But in reality, any shape and size is possible. Choose any colour from our collections and let your imagination do the rest!



Collection & product Colourful Zodiac hexagon tiles Installation pattern in 3 different directions  
Client Hekta Pa Tur (NO) Architect Vårdal Arkitekter AS Photo Anne Bråtveit

Six shapes  
and countless  
possibilities

**Square**  
25 x 25 cm  
9.84" x 9.84"

**Square**  
100 x 100 cm  
39.37" x 39.37"

**Plank**  
22 x 66 cm  
8.66" x 25.98"

**Hexagon**  
50 x 57,70 cm  
19.68" x 22.71"

**Diamond**  
65 x 37,50 cm  
25.59" x 14.76"

**Triangle**  
50 x 50 x 70,70 cm  
19.68" x 19.68" x 27.83"

The Play offer is an additional range of shapes, available upon request, next to our standard offer of tiles (50 x 50 cm / 19.68" x 19.68"), planks (20 x 75 cm / 7.87" x 29.53") or rolls (200 cm / 78.74"). Availability depending on the collection.





## 2TEC2 rugs

- Beautiful textures, inviting spaces — **138**
- Collection overview — **139**
- Shapes & sizes — **140**



# Beautiful textures to create inviting spaces

## BEAUTIFUL RUGS TO CREATE ATMOSPHERE

Our woven rugs make for unique centrepieces that can accentuate a neutral space or extend the floor style of another room, without compromising on cleanability and performance. Durable, strong and uniquely beautiful, our woven rugs are the solution to create **extra atmosphere** or **functional zoning** in hospitality, reception areas, office spaces, meeting rooms, showrooms or outdoors.

## DIFFERENT SHAPES, MATCHING FINISH

Our rugs come in various shapes and sizes, finished with a border that matches the design and colour of the rug.

Would you rather have something truly unique? Bespoke options are available, ask our sales team to work out a custom-made floor solution with our rugs.

## Alhambra



Tangerine



Pacific

## Hybrid



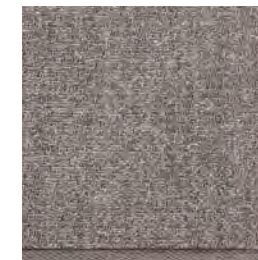
Helios



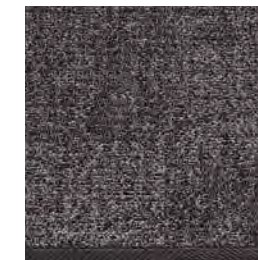
Stellar



Lyra



Meteor



Darkside

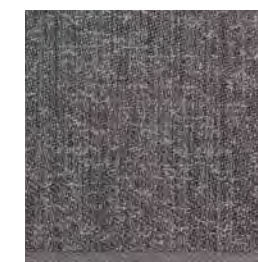
## Infinite



Juno



Coffee Bean



Planet

## Marble



Carrara

## Lustre



Morion Brown



Collection & product Hybrid Darkside O1 180 x 240 cm / 70.87" x 94.49"

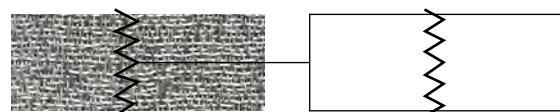


**AVAILABLE SHAPES & SIZES**

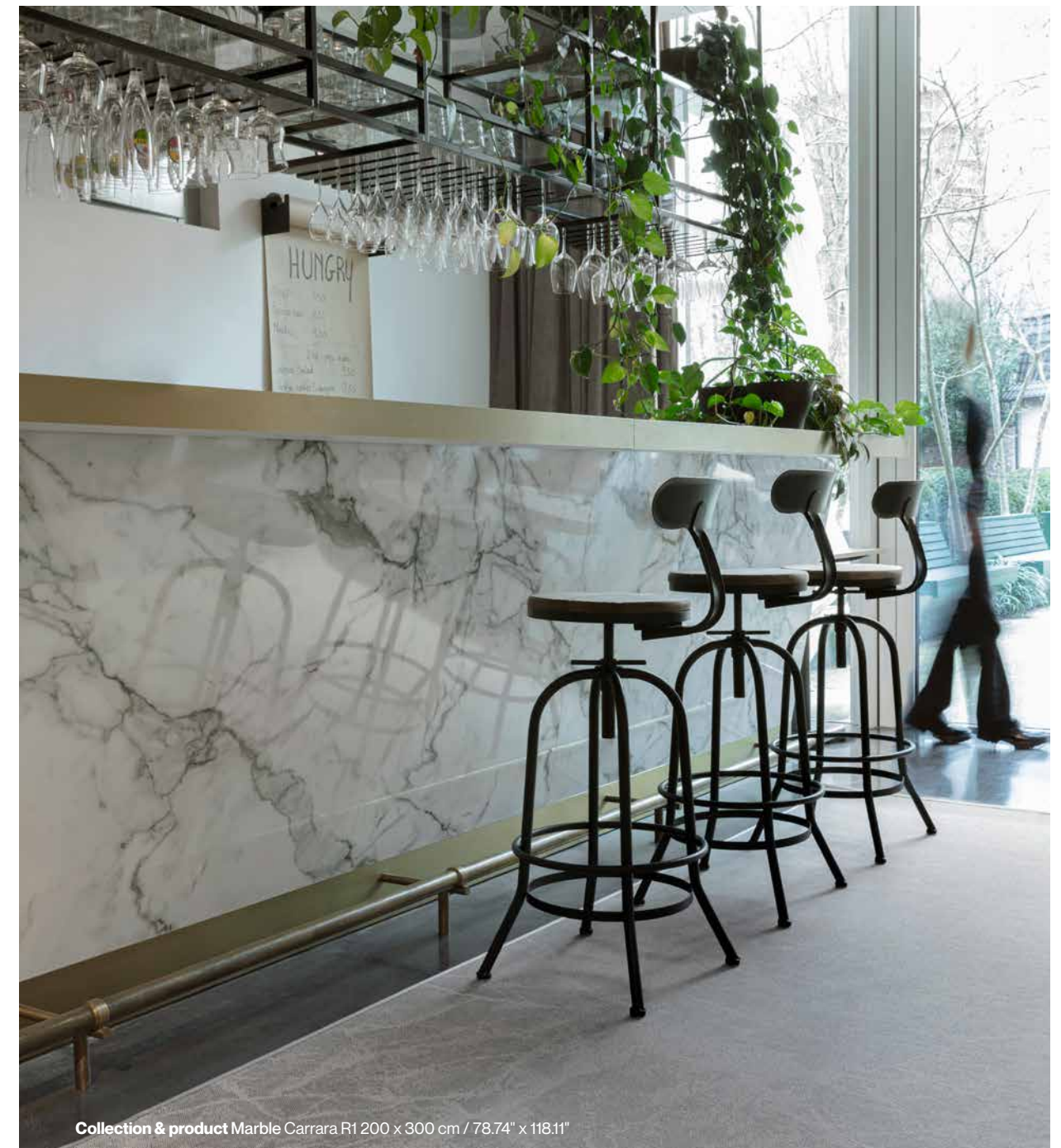


Centimeters	Inches	Rectangle	Stadium	Organic	Circle
140 x 200 cm	55.12" x 78.74"	R1	S1		
180 x 240 cm	70.87" x 94.49"	R1	S1	O1	
200 x 200 cm	78.74" x 78.74"	R1	S1		
200 x 250 cm	78.74" x 98.43"	R1	S1		
200 x 300 cm	78.74" x 118.11"	R1	S1	O1	
200 x 350 cm	78.74" x 137.80"	R1	S1		
200 x 400 cm	78.74" x 157.48"	R1	S1	O1	
250 x 250 cm	98.43" x 98.43"	R1•	S1•		
250 x 300 cm	98.43" x 118.11"	R1•	S1•		
250 x 350 cm	98.43" x 137.80"	R1•	S1•	O1•	
250 x 400 cm	98.43" x 157.48"	R1•	S1•		
300 x 300 cm	118.11" x 118.11"	R1•	S1•		
300 x 350 cm	118.11" x 137.80"	R1•	S1•	O1•	
300 x 400 cm	118.11" x 157.48"	R1•	S1•	O1•	
350 x 350 cm	137.80" x 137.80"	R1•	S1•		
350 x 400 cm	137.80" x 157.48"	R1•	S1•		
400 x 400 cm	157.48" x 157.48"	R1•	S1•		
Ø 200 cm	Ø 78.74"				C1•
Ø 250 cm	Ø 98.43"				C1•
Ø 300 cm	Ø 118.11"				C1•
Ø 350 cm	Ø 137.80"				C1•
Ø 400 cm	Ø 157.48"				C1•

• With stitched seam (barely visible) for dimensions >200cm / 78.74"



Custom rug sizes, shapes, product colours and finishes are available on demand and have an additional surcharge. Contact our sales team [sales@2tec2.com](mailto:sales@2tec2.com).



Collection & product Marble Carrara R1 200 x 300 cm / 78.74" x 118.11"





Collection & product Strata Azurite tiles Installation pattern Diamond A/B Photo Bruno Eggermont

## Installation & technical info

Installation — **145**  
Technical info — **146**





## Installation of a 2TEC2 floor

### ADHESIVES

Rolls are to be placed with a permanent adhesive, while tiles are to be placed with a non-permanent one.

### USE AND RE-USE

Tiles installed with tackifier are easy to remove and replace if you wish to update your interior or to re-use them in another location.



### THE FINISHING TOUCH

We recommend to install your 2TEC2 floors as the final step in your construction or renovation project to protect our beautiful patterns from dust, paint or indents.

### READY-TO-USE

You can immediately walk on 2TEC2 and furnish your room after the installation, no need to wait.

### A VERSATILE FLOORING SOLUTION

2TEC2 can be installed on different types of evenly levelled subfloors: cement-based floors, stone floors, even LVT or hardboard floors can be assessed fit for 2TEC2 installation. Just make sure the underfloor is clean, dry and completely even levelled, and you will get a perfect result.

A professional installer will ensure that the beautiful texture of 2TEC2 comes to life in your room. Feel free to reach out to our network of installers or make sure to consult our installation instructions. 2TEC2 is always at your disposal to provide additional technical support.



Technical info  
19dB — Class 1

Class	Woven jacquard top layer	Acoustics
Class 1	900g/m <sup>2</sup> - 25.54 oz/yd <sup>2</sup>	SonoFelt™ 19dB

Technical info  
19dB — Class 1

<b>Composition</b>	83% vinyl 7% fiberglass 10% PET	<b>Antibacterial Activity</b> ISO 20743	Strong (A≥3)
<b>Recycled Content</b>	Yes	<b>Foot traffic test</b> ASTM D6119-12	Heavy traffic
<b>Acoustical layer</b>	70% recycled content	<b>Antistatic</b> ISO 6356 AATCC 134-2006	< 2 kV Permanently antistatic
<b>Backing</b>	Vinyl + Felt	<b>Slip resistance</b> EN 13893 ASTM C1028-07 DIN 51130 EN 13036-4	≥ ds 0,85 R9 65
<b>Total thickness</b> ISO 1765	4,6 mm - 0.18"	<b>Impact sound reduction</b> ISO 10140 ASTM E492-09 & E989-06 ASTM E2179-03 & E989-06	19dB IIC = 54dB IICc = 51dB Δ IIC = 23dB
<b>Total weight</b> ISO 8543	3200 g/m <sup>2</sup> - 94.38 oz/yd <sup>2</sup>	<b>Acoustical absorption</b> ISO 354	α <sub>w</sub> = 0,15
<b>Roll width*</b> EN ISO 24341	ca. 200 cm - ca. 6'7"	<b>Walking noise reduction</b> EPLF 021029-3 EN 16205	70% 76 dB
<b>Roll length*</b> EN ISO 24341	ca. 30 m - 32.8 yd	<b>Castor chair suitability</b> EN 985	Continuous use
<b>Plank size* (20 pcs per box)</b>	20 x 75 cm - 7.87" x 29.53"	<b>Light fastness</b> ISO 105-B02	8
<b>Tile size* (16 pcs per box)</b> EN 994	50 cm x 50 cm - 19.69" x 19.69"	<b>Thermal resistance</b> ISO 8302	Suitable for underfloor heating
<b>Resistance to fraying</b> EN ISO 10833	Pass	<b>Residual indentation</b> EN ISO 24343-1	0.43 mm
<b>Level of Use</b> EN 1307 ASTM D5252	Class 33 Heavy commercial use	<b>Reaction to fire</b> EN 13501-1 ASTM E84	B <sub>fl</sub> -s1 A rating
<b>Reaction to fire</b> EN 13501-1 ASTM E84	B <sub>fl</sub> -s1 A rating	<b>E1</b> EN 717-1	E1
<b>Critical radiant flux</b> ASTM E648 NFPA	0,84 W/cm <sup>2</sup> Class I	<b>Warranty</b>	15 years* *Terms and conditions are available on request
<b>Smoke density</b> ASTM E662	< 300	<b>CE Certificate</b> EN 14041	0493-CPR-0151
<b>Dimensional stability</b> EN 986 - ISO 2551	Meets the requirements	<b>UK-CA</b>	8515-CPR-0151
<b>Fungal growth</b> EN 14119-A2	No Growth, Grade 0	* Available in rolls, tiles and/or planks according to collection specifications.	

Environment & indoor air quality



Technical info  
Bio-based 19dB — Class 2

Class	Woven jacquard top layer	Acoustics
Class 2*	900g/m <sup>2</sup> - 25.54 oz/yd <sup>2</sup> 45 % Bio-based carbon	SonoFelt™ 19dB

\*Bio-based: Strata collection (Introduced 2023)

Technical info  
Bio-based 19dB — Class 2

<b>Composition</b>	83% vinyl 7% fiberglass 10% PET	<b>Fungal growth</b> EN 14119-A2	No Growth, Grade 0
<b>Recycled Content</b>	Yes	<b>Antibacterial Activity</b> ISO 20743	Strong (A≥3)
<b>Acoustical layer</b>	70% recycled content	<b>Foot traffic test</b> ASTM D6119-12	Heavy traffic
<b>Backing</b>	Vinyl + Felt	<b>Residual indentation</b> EN ISO 24343-1	0.43 mm
<b>Total thickness</b> ISO 1765	4,6 mm - 0.18"	<b>Antistatic</b> ISO 6356 AATCC 134-2006	< 2 kV Permanently antistatic
<b>Total weight</b> ISO 8543	3200 g/m <sup>2</sup> - 94.38 oz/yd <sup>2</sup>	<b>Slip resistance</b> EN 13893 ASTM C1028-07 DIN 51130 EN 13036-4	≥ ds 0,85 R9 65
<b>Roll width*</b> EN ISO 24341	ca. 200 cm - ca. 6'7"	<b>Impact sound reduction</b> ISO 10140 ASTM E492-09 & E989-06 ASTM E2179-03 & E989-06	19dB IIC = 54dB IICc = 51dB Δ IIC = 23dB
<b>Roll length*</b> EN ISO 24341	ca. 30 m - 32.8 yd	<b>Acoustical absorption</b> ISO 354	α <sub>w</sub> = 0,15
<b>Plank size* (20 pcs per box)</b>	20 x 75 cm - 7.87" x 29.53"	<b>Walking noise reduction</b> EPLF 021029-3 EN 16205	70% 76dB
<b>Tile size* (16 pcs per box)</b> EN 994	50 cm x 50 cm - 19.69" x 19.69"	<b>Castor chair suitability</b> EN 985	Continuous use
<b>Resistance to fraying</b> EN ISO 10833	Pass	<b>Light fastness</b> ISO 105-B02	8
<b>Level of Use</b> EN 1307 ASTM D5252	Class 33 Heavy commercial use	<b>Thermal resistance</b> ISO 8302	Suitable for underfloor heating
<b>Reaction to fire</b> EN 13501-1 ASTM E84	B <sub>fl</sub> -s1 A rating	<b>E1</b> EN 717-1	E1
<b>Critical radiant flux</b> ASTM E648 NFPA	0,84 W/cm <sup>2</sup> Class I	<b>Warranty</b>	15 years* *Terms and conditions are available on request
<b>Smoke density</b> ASTM E662	< 300	<b>CE Certificate</b> EN 14041	0493-CPR-0151
<b>Dimensional stability</b> EN 986 - ISO 2551	Meets the requirements	<b>UK-CA</b>	8515-CPR-0151

\* Available in rolls, tiles and/or planks according to collection specifications.

Environment & indoor air quality





# Samples & tools

## 3D ROOM VISUALISER

With our state-of-the-art digital simulator, you can try out several of our floor coverings in a range of interiors. This will help you in your choice of product, installation pattern and colour. Let's determine the best match for your space.

Not fully sure what you are looking for? Try our "Be Original" option, which presents original designs that will surely help your creativity flow.

Be inspired on [simulation.2tec2.com](http://simulation.2tec2.com)

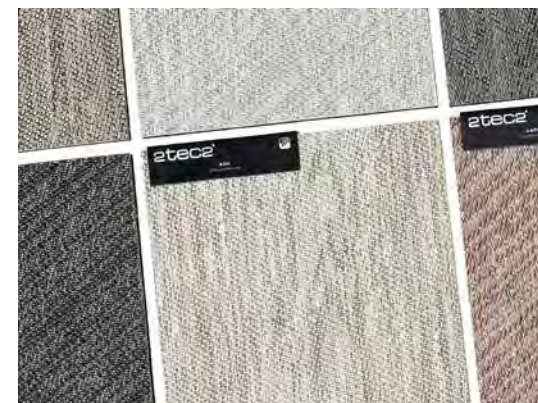


## SAMPLE SERVICE

Feel free to order samples of your favourite products. This way, you can see and feel our flooring solutions in real life, giving you a clearer idea of what to expect. The size of our samples is 20 cm x 20 cm (7.87" x 7.87").

Call us or order through our website. You can also apply for samples on various platforms such as Material Bank.

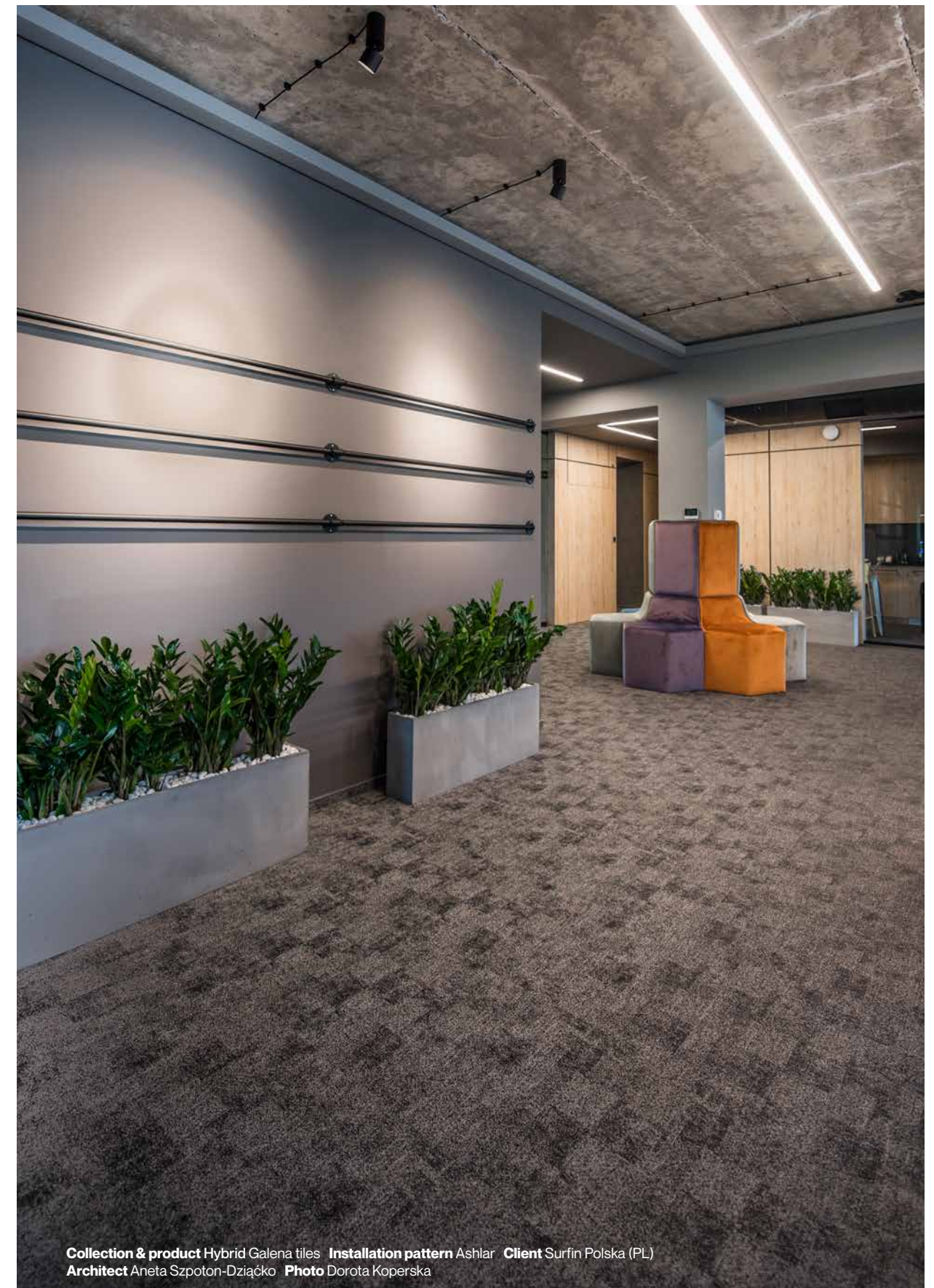
Be inspired, order our samples on [2tec2.com](http://2tec2.com) or on:



LIMITED EDITION

If you wish to use tufted or woven rugs for your project, 2TEC2's sister company Limited Edition is the perfect solution for this. Limited Edition was founded by Katia Dewitte as well, in 1991. Since then, the company has been devoted to creating luxurious, custom-made rugs for the residential and commercial market.

Be inspired on [le.be](http://le.be)



Collection & product Hybrid Galena tiles Installation pattern Ashlar Client Surfin Polska (PL)  
Architect Aneta Szpoton-Dziaćko Photo Dorota Koperska





**2tec2**<sup>®</sup>  
high tech flooring

**Headquarters & showroom**

Chaussée d'Aelbeke 284 B-7700 Mouscron

**T** +32 (0)56 85 47 47 **E** [sales@2tec2.com](mailto:sales@2tec2.com) **W** [2tec2.com](http://2tec2.com)