

HYBRID & INFINITE

BY 2TEC2

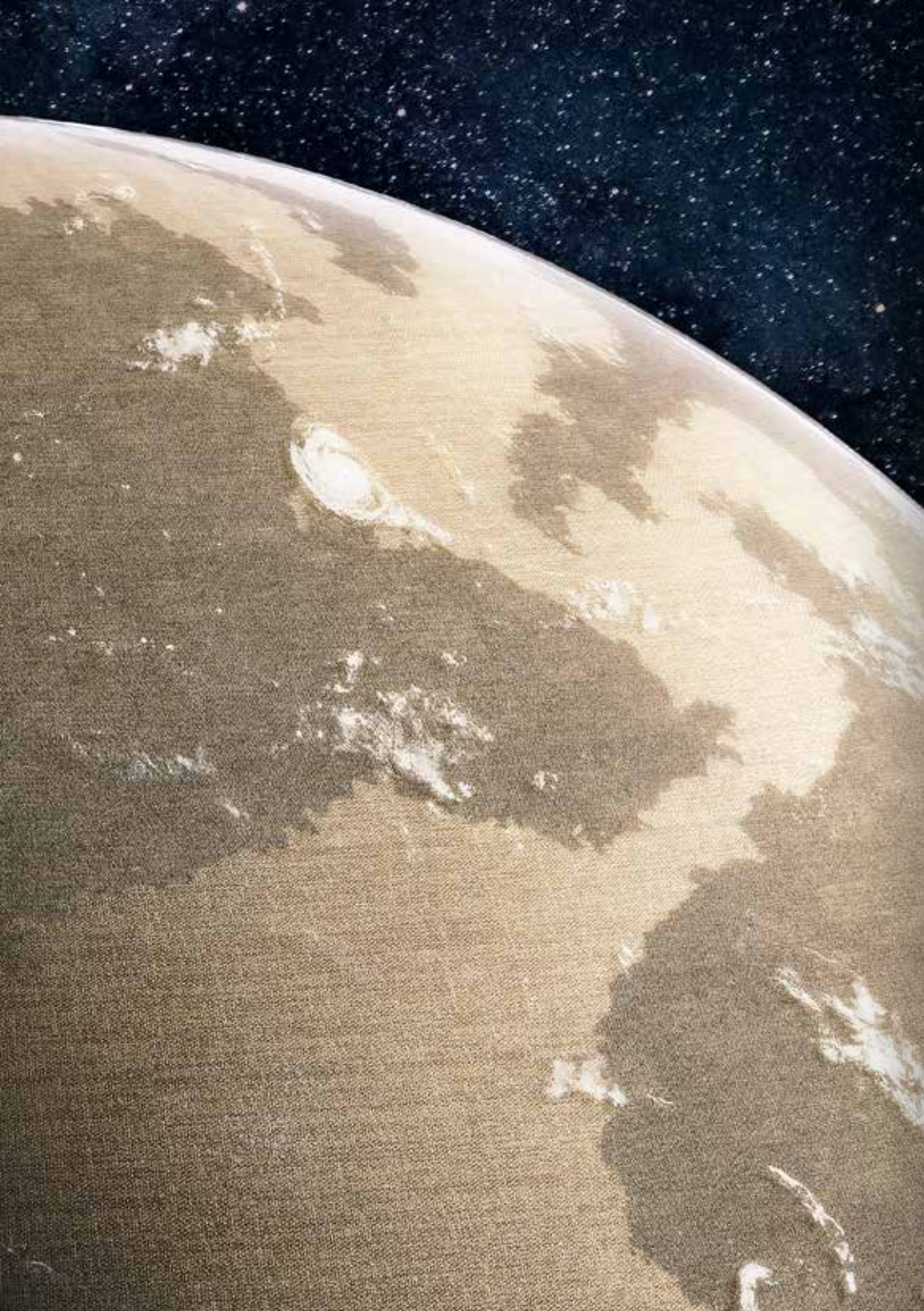
A SEAMLESS  
UNIVERSE.

## HYBRID & INFINITE

The Hybrid and Infinite collections are the stars of seamlessly woven vinyl tiles. These gorgeous patterns intertwine the best of both worlds: the advantages of broadloom flooring and the flexibility to express your creativity with ease.

With our unique weaving technique, these tiles disappear into a fluid pattern to present a wall-to-wall effect. Reaching all edges of your universe, seamlessly.

**2tec2**<sup>®</sup>  
high tech flooring



## HYBRID

Celeste	6
Darkside	7
Lyra	8
Magellan	9
Rosetta	10
Stellar	11
Hybrid collection overview	20

## INFINITE

Moonrock	14
Planet	15
Moonless Night	16
Topazino	17
Flintino	18
Desertino	19
Infinite collection overview	21



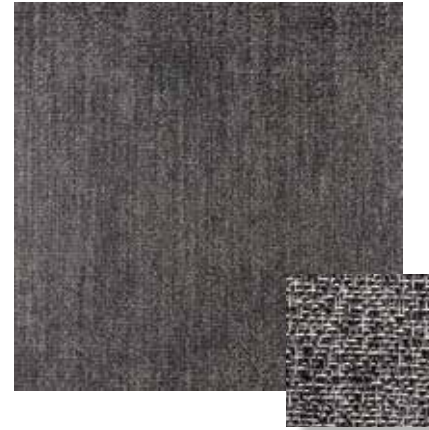
# HYBRID

## COLLECTION

Our Hybrid references are deeply rooted in nature. These biophilic floors are a representation of the ongoing struggle between two of the most ancient elements of our world: light and dark. Our pattern tightly weaves together these contrasting hues to create a natural harmony, resulting in a beautiful visual effect.

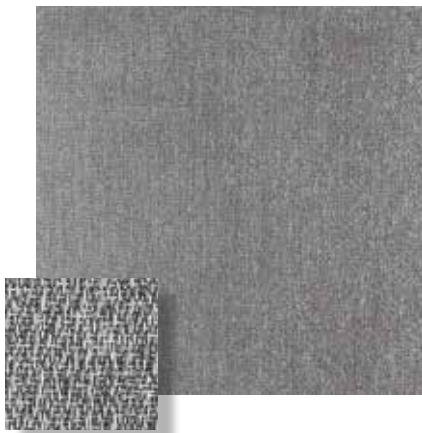


## DARKSIDE



Mysterious and enticing, Darkside makes use of sombre colours to evoke curiosity and depth. The mix of deep hues and spectral tones are spellbinding and provide a perfect counterbalance to lighter pieces in your space.

## CELESTE

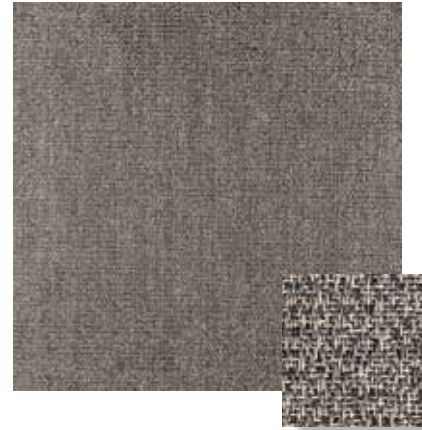


The name Celeste is rooted in the Latin word for heavenly, which perfectly describes the atmosphere of your space with this design. The mixture of light and dark grey hues is reminiscent of the moon, the celestial body that signifies our first step to the final frontier of human exploration.





## MAGELLAN



The deep brown hues of Magellan will remind occupants of the majestic clay parapets of Portugal and Spain. Named after the world's most prominent explorer, Magellan inspires one to experiment, push beyond familiar boundaries, and chart new paths.

## LYRA



Rooted in the legends of Ancient Greece, Lyra is the celestial representation of Orpheus' lyre, a musical instrument so enchanting even inanimate objects would be bewitched by it. For this, our design is well named. Combining light and dark hues, this Lyra will elevate your interior design, transforming your room from just a space into a spellbinding experience.



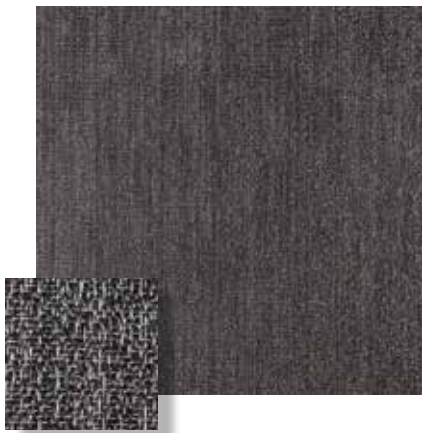


## STELLAR



Stellar is, well, simply stellar. Its vibrant colouring will light up your space. At the same time, its design and underfoot support are exceptional, standing out from other designs like a star in the night sky.

## ROSETTA



Rosetta is accommodating to a variety of spaces, regardless of size, location, or use. Rosetta borrows its colour scheme from the historic basalt stone that was used as a bridge to connect cultures. Like its namesake, Rosetta's design is unifying, and truly a marvel to behold.





# INFINITE

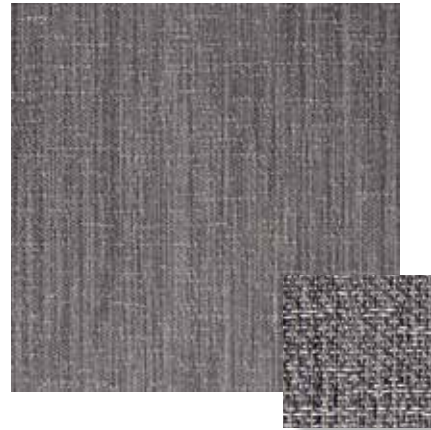
## COLLECTION

Our Infinite collection is inspired by the mysteries beyond our planet. Looking upwards, we sought to bring the beauty and awe of the night sky, and the celestial bodies that inhabit it, down beneath your feet. Named after the cosmic figures of our universe, each of the pieces in this collection expresses limitless power.





## PLANET



Like the heavenly bodies that make up our solar system, Planet is complex and diverse. Its mixture of light and dark streaks will give your space an interstellar ambience that will make your space feel hospitable.

## MOONROCK



Moonrock embodies the soft, supple light that shines on rock formations at night. Its luminous, calming colours reflect the light of your space, amplifying it to make occupants feel safe, and invited.



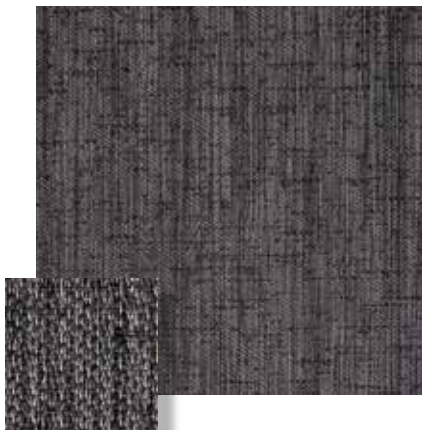


## TOPAZINO



Topazino uses a uniquely designed pattern to capture the prismatic features found in precious gemstones. The blend of hues in this design replicates the way light refracts through the body of a Topaz when held to the light and will make your space stand out to occupants.

## MOONLESS NIGHT



Moonless Night gives your space a dreamy mystique. Using a dark base with highlights flecked through, the design emulates a heavy darkness, with a touch of luminescence, like stars in an otherwise pitch-black sky.





## DESERTINO



Imagine... the sun glistening on your skin and the silence of an arid desert. The serenity of nature and the possibility of adventure, both at once. Desertino showcases an array of colours inspired by desert sunsets and powdery sand patterned by the winds brushing against its surface.

## FLINTINO



Flintino is inspired by the mineral used over centuries to build and maintain empires. Flint is the original tool used to produce fire. Similarly, this collection pattern will ignite the creativity of those who engage with it.



## HYBRID COLLECTION



Stellar P. 11    Magellan P. 9    Stardust    Helios



Lyra P. 8    Darkside P. 7    Meteor    Celeste P. 6



Galena    Solaris    Rosetta P. 10    Halley

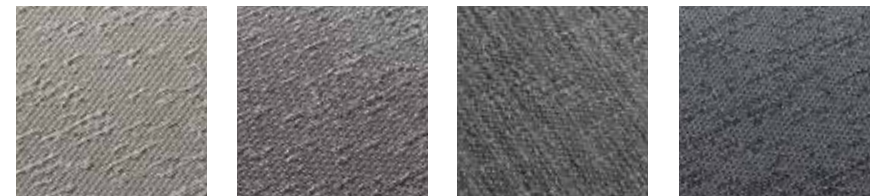
## INFINITE COLLECTION



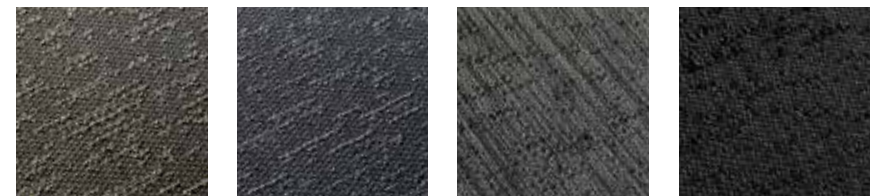
Desertino P. 19    Topazino P. 17    Moonrock P. 14    Coffee Bean



Juno    Flintino P. 18    Orion    Nebula



Comet    Titan    Planet P. 15    Andromeda



Neptune    Black Hole    Moonless Night P. 16    Eclipse



2TEC2.COM

Chaussée d'Aelbeke 284 – B-7700 Mouscron, Belgium  
sales@2tec2.com