



MARBLE & DESERT

BY 2TEC2

MARBLE

Aliveri	9
Carrara	11
Emperador	13
Fior	15
Portoro	17
Triana	19

DESERT

Antarctic	23
Farafra	25
Gobi	27
Hoyos	29
Karakum	31
Namib	33

REFINED FLOORING INSPIRED BY NATURE'S FINEST.

NATURE'S FINEST

Nature is and always will be a rich and ever-present source of inspiration. Minerals such as sand and marble are found everywhere. These raw, unprocessed components, with their rough shell, possess infinite beauty and potential. They determine the colour of our being, and especially today, the colour of our interiors.

NEED FOR A STRONG DESIGN

Nature is very prominent in today's trends. Sustainability and ecology are becoming increasingly important and terrestrial-inspired designs are showing up everywhere. Mother Earth is making her way into our interiors and this includes office buildings, schools and restaurants. Highly technical and durable floors that can stand the test of time are essential. Good acoustic properties, easy maintenance, as well as UV, water and shock resistance are

key for these floors. This well-considered balance between natural design and strong materials stimulates a motivating, inspiring and relaxing (working) environment and brings comfort to users.

REFINED FLOORING

2tec2's new Marble & Desert collections match our longing for nature and sustainability. 2tec2 has polished the 'rough diamonds', marble and sand, into two high-quality and technically advanced floor coverings and the result is two woven vinyl collections. They stay true to their original source of inspiration by preserving the beauty of the mineral.

With the looks of a carpet, but with the advantages of a hard floor and a pure mineral interpretation, these two collections are the epitome of innovative design.



MARBLE

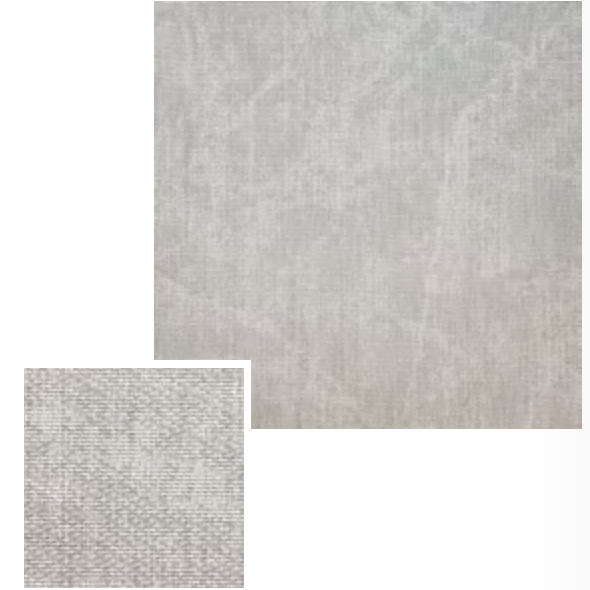
COLLECTION

Eminent, regal, and everlasting. These words come to mind when viewing our Marble collection. This collection is inspired by the crystalline material that has been used to build impressive palace halls and acted as the canvas for breathtaking monuments throughout the ages. Each design features the wild, yet purposeful streaks of color that are unique to its namesake, echoing the controlled chaos that can only come from nature's own design.



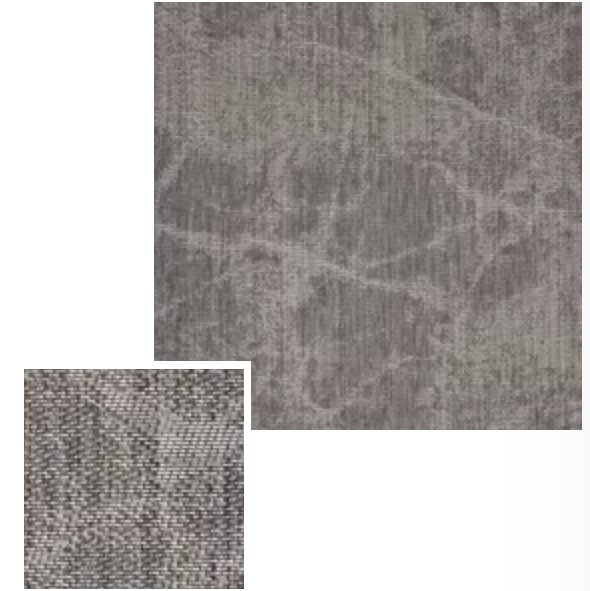
ALIVERI

The Aliveri stone, pulled from the sun-kissed shores of Greece, is imbued with strong, white lines. However, it is the smaller, more intricate veins that ripple throughout the bedrock of this piece that make Aliveri so unique. Its detailing is mesmerizing, and its overall effect is sure to hold your occupant's gaze.



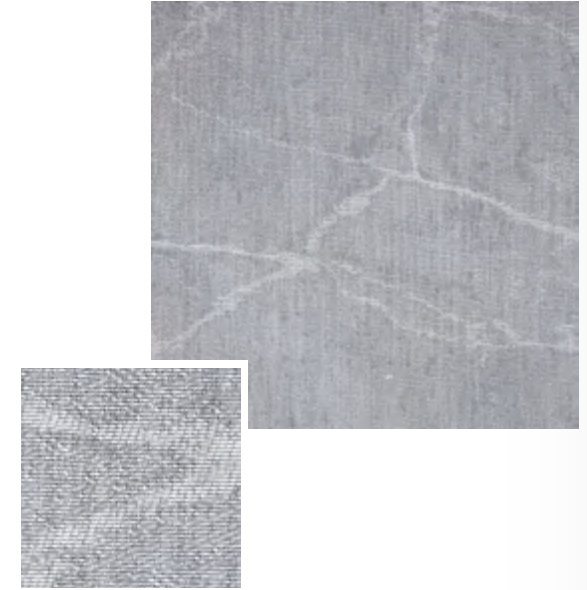
CARRARA

Named after the stone unique to the quarries of Tuscany, Carrara features stark veins of white against a muted, base tone. Used by the great Roman empire to construct monuments to the gods, this pattern imitates the immense power and reverence of those houses to the cosmic entities of a forgotten past.



EMPERADOR

Used to build illustrious structures in the Iberian Peninsula, the Spanish marble this piece is named for is known for its ghostly geometric shapes, outlined by the hairline fractures that run through it. Emperador showcases these elements in its design, using thin, crisscrossing veins and washed tones to create pockets of color against its darker, baseline hues.



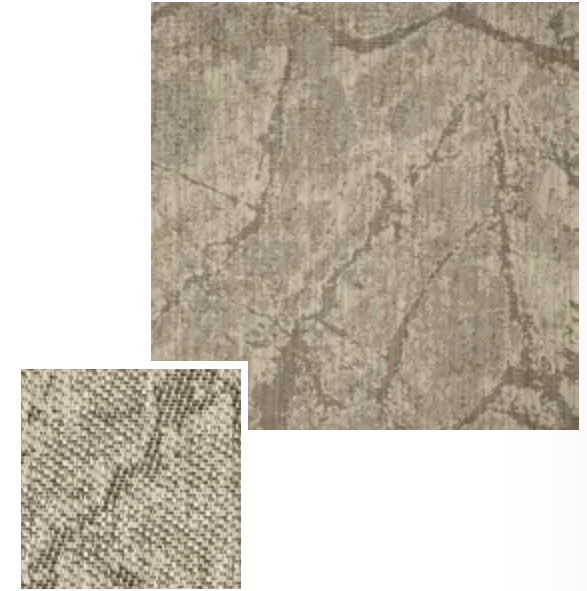
FIOR

Given the name "wildflower" by the Italian masons who first used this stone, Fior is delicate and supple. The pearly mixture that makes up the foundation of this pattern is infused with warm tendrils of white, showing that while stone may seem immovable, it can also possess a softer nature.



PORTORO

The most outspoken of this collection, Portoro is defined by the harsh contrast of light and dark. Like the stone it is named for, the bold coloring of this piece is an elegant statement that your occupants will describe as both haunting and breathtaking.



TRIANA

Triana's complex, mesh network of veins is more reminiscent of the biological structures of a living creature than of an inanimate piece of stone. The entangled lattice of seams across the speckled background adds a unique breath of life to the firm absolution of stone.



DESERT

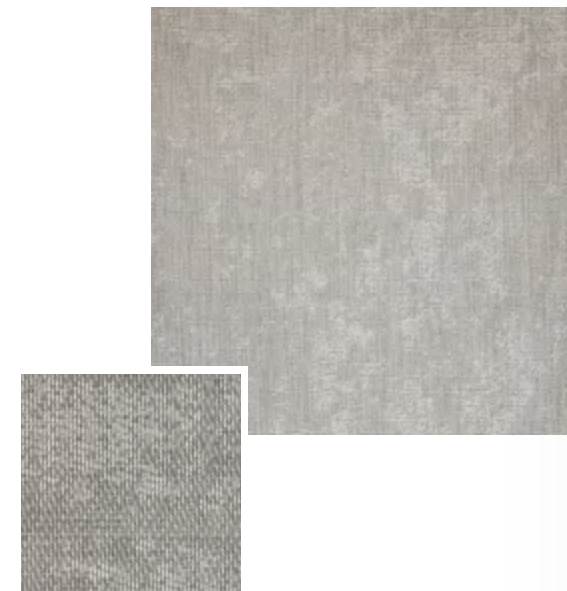
COLLECTION

The Desert collection pays homage to the awe-inspiring stretches of arid wasteland that blanket our planet. Though, the pattern may appear simple, just like the terrain it's named for, each piece is made of a unique and vibrant ecosystem, which creates an impressive, everlasting impression. The visual elements of each piece, emulating shifting desert sands, will bring occupants back to the unadorned ways of life our nomadic ancestors once lived.



ANTARCTIC

Drawing from the frigid terrain of our planet's southern-most point, Antarctic's flowing pattern is a monument to this raw, unforgiving landscape. Inspired by the cracked glaciers and frozen plains that make up the snowy Antarctic tundra, this pattern also portrays the tragic yet grand spectacle of nature's most free-flowing element, fated to remain frozen in place.



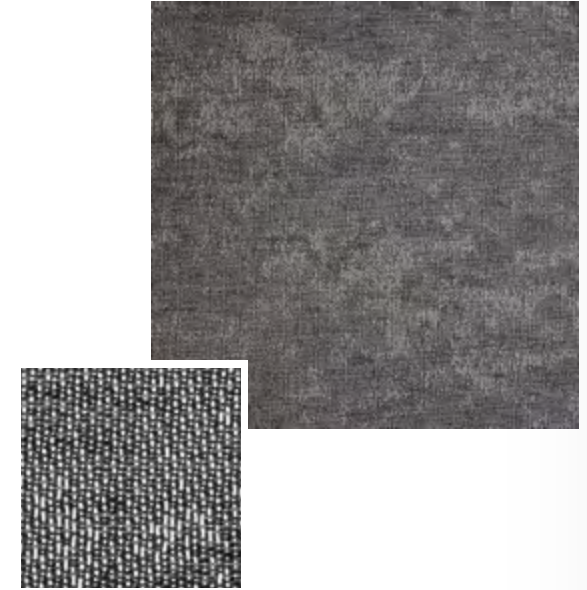
FARAFRA

Named after Egypt's peculiar, desert landscape, Farafra is a magnificent pattern of colors designed to capture the eye. The swirling, light hues that dance atop the base notes below is reminiscent of the white capped dunes of this natural wonder.



GOBI

One of the largest deserts in the world, the Gobi stands king among the arid landscapes that stretch across this planet. This piece captures the expansive nature of the Gobi, as well as the towering mountains of sand that make up this awe-inspiring desert.



HOYOS

Like many deserts, Hoyos is a rich and complex tapestry, where new life can be uncovered with each exploration. Weaving together three varying shades, Hoyos will entice your occupants to discover new elements of your interior design with each pass through your space



KARAKUM

Karakum is named for the immense Central Asian desert, home to some of the world's most beautiful, and most terrifying, geological wonders. This pattern exhibits large patches of color, spread across stretches of darker, emboldened tones.



NAMIB

This piece is inspired by the coastal South African desert, the dry, arid wastelands meet the rich, teeming ecosystems of the Atlantic. The patterns on Namib are less pronounced and spread thin, like dunes of sand washed away by the push and pull of the ocean tide.

MARBLE



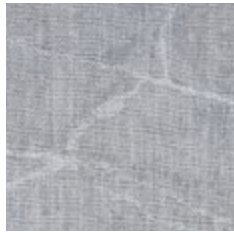
Aliveri P. 8



Carrara P. 10



Emperador P. 12



Fior P. 14



Portoro P. 16



Triana P. 18

DESERT



Antarctic P. 22



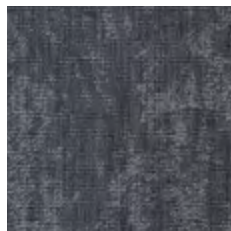
Farafra P. 24



Gobi P. 26



Hoyos P. 28



Karakum P.30



Namib P. 32

2TEC2.COM

Chaussée d'Aelbeke 284 - B-7700 Mouscron, Belgium
sales@2tec2.com

