

2tec2<sup>®</sup>  
high tech flooring



# Refined woven flooring

WELL Building Standard<sup>®</sup>  
(WELL v2<sup>™</sup>)









# Health and well-being at the center of design

## WELL BUILDING STANDARD®

The WELL Building Standard® (v2) is an international certification system designed to promote human health in buildings. It provides a framework for designing more thoughtful spaces that enhance people's well-being and comfort. Because we spend so much time indoors and at the office, it is important that our indoor environment and the buildings we live and work in are comfortable and generally enhance, not compromise, our health and wellness.

WELL takes a performance-based approach, requiring all projects to undergo on-site testing. To achieve the certification, a building must meet 10 different concepts. These concepts are divided into over 100 Features, each addressing issues that impact the health and comfort of occupants.

There are two types of features:

- **PRECONDITIONS:** these define the fundamental components of a WELL Certified space and serve as the foundation of a healthy building. All preconditions are mandatory for certification.
- **OPTIMIZATIONS:** these are optional pathways that can help in getting a higher score.



06 — Air

Light — 08

10 — Sound

Materials — 12

# 2TEC2's Sustainable Solutions:

## Our contribution to your WELL certification

### Score Overview

As a building product, 2TEC2 can play a key role in achieving WELL certification®, by contributing to **4 concepts** and **12 features**.



#### CONCEPT

#### FEATURE

Air

Precondition A01 Air Quality

Optimization A14 Microbe and Mold Control

Light

Optimization L05 Daylight Design Strategies

Optimization L07 Visual Balance

Sound

Optimization S04 Reverberation Time

Optimization S07 Impact Noise Management

Materials

Precondition X01 Material Restrictions

Optimization X05 Enhanced Material Restrictions

Optimization X06 VOC Restrictions

Optimization X07 Materials Transparency

Optimization X08 Materials Optimization

Optimization X11 Cleaning Products and Protocols

2tec2



Air

Alhambra Cyan

Buildings should provide indoor air quality that meets standards set by public health authorities. 2TEC2 contributes to a healthy indoor environment and has the certificates and ecolabels to prove it.

## **PRECONDITION**

### **A01 Air Quality**

Exposure to air pollutants, such as Volatile Organic Compounds (VOCs) and ozone, has been shown to increase the risk of cancer and respiratory or cardiovascular diseases. Therefore, it is important to define indoor air quality levels that minimize risk to human health.

→ According to our Environmental Product Declaration (EPD), 2TEC2 releases no carbon monoxide or ozone emissions during the use phase, contributing to a cleaner and healthier indoor environment.

→ Our products comply with the permissible emission of VOCs and are 100% safe for indoor use. All our certificates and labels, like Floorscore®, GUT, M1, and Indoor Air Comfort® Gold, can be found on our technical data sheet.

→ One of the big issues today concerning indoor air quality is fine dust. Did you know that we inhale about two teaspoons of fine dust per day? These fine dust particles penetrate deep into our lungs and can cause damage to the respiratory and cardiovascular system. In contrast to hard floors, the woven structure of our top layer captures fine dust particles, preventing them from floating around in the air. Less fine dust is inhaled, improving the indoor air quality. The particles can be easily removed during cleaning, so it's important to keep your flooring well-maintained!

→ 2TEC2 raw materials do not contain formaldehyde and there's also no formaldehyde added during production. Our flooring meets the most important requirements for low formaldehyde emission, as tested by CDPH regulations and in accordance with CE.

→ Formaldehyde < 2ug/m<sup>3</sup>

→ TVOC < 85ug/m<sup>3</sup>

## **OPTIMIZATION**

### **A14 Microbe and Mold Control**

Mold can trigger asthma, headaches, allergies and other respiratory system disorders.

Thanks to 2TEC2's anti-mold and anti-bacterial properties, our flooring helps to eliminate or reduce growth of microbes & mold. Lab tests according to EN14119-A2 & ISO 20743 are available on request.





# Light



Did you know that humans spend approximately 90% of their time indoors? Ensuring appropriate lighting in buildings is crucial for our mood, circadian health and productivity. Discover how 2TEC2 can help.

## **OPTIMIZATION**

### **L05 Daylight Design Strategies & L07 Visual Balance**

A correctly lit environment avoids visual discomfort and eye fatigue, resulting in improved focus and performance.

→ All Light Reflectance Values (LRV) of our products are available, allowing for an optimal lighting design strategy. Thanks to our wide range of values, you can either brighten up a room or prevent overexposure.


→ All new and refurbished public buildings and workspaces are required to ensure safe entry, exit and passage throughout the building. The regulation demands a good visual contrast between floors and walls to help visually impaired people. Our wide range of dark and light floorings helps in making an appropriate choice.

2tec2



# Sound





Acoustics play a crucial role in creating comfortable spaces. 2TEC2's thoughtful acoustic design enhances well-being, supports communication, and helps people feel at ease in their surroundings.

## **OPTIMIZATION**

### **S04 Reverberation Time &**

### **S07 Impact Noise Management**

Sound is a vibration that travels through the air as waves. When a sound wave bumps onto a surface, it can reflect into the same room or transmit to the adjacent area. In interior spaces, how sound behaves plays a key role in comfort and well-being.

The amount it takes for a sound to fade by 60 dB after the initial noise is called reverberation time. The duration depends on the room's size, surface area, and the sound-absorbing qualities of the materials used.

Impact noise typically derives from objects impacting a floor. It travels through structures (e.g., walls and floors) as vibrations that are then radiated as airborne sound in adjacent spaces.

Spaces with high reverberation and impact noise can reduce cognition, memory retention and concentration. Additionally, they lower speech intelligibility among hard of hearing and non-native speakers.

2TEC2's unique combination of a felt backing (SonoFelt®) and a woven surface delivers outstanding acoustic comfort. It effectively absorbs sound waves and reduces both impact and walking noise. All values are available on our technical data sheet.

→ IIC = 54dB (ASTM E492-09)

# Materials

WELL aims to reduce human exposure to chemicals that may impact health during the construction and operation of buildings. Discover how 2TEC2 contributes.



Hybrid Helios Project HQ CD&V (B)





BE) Architect SAM

## PRECONDITION

### X01 Material Restrictions

Use of hazardous materials in construction, specifically asbestos, mercury and lead, presents serious and negative health impacts on humans. Diseases caused by exposure to these chemicals include asbestosis, developmental issues in children and various forms of cancer.

→ 2TEC2 tiles are completely free of asbestos, mercury and heavy metals. All raw materials purchased and used for producing 2TEC2 tiles are REACH-compliant, guaranteeing strict adherence to European standards for chemical safety.

→ Additionally, 2TEC2 holds the GUT certificate, confirming our commitment to health and sustainability. The GUT criteria include strict bans and limits on harmful substances like SVHCs, azo dyes, allergenic or carcinogenic dyes, phthalates, halogenated flame retardants, and more. These standards ensure that our flooring contributes to a safer indoor environment.

→ 2TEC2 has a registered PRODIS license, offering full transparency. Visit [www.gut-prodis.eu](http://www.gut-prodis.eu) and enter our license number (98DED826) to view detailed product information, current certification status, and environmental documentation (EPD).

## OPTIMIZATION

### X05 Enhanced Material Restrictions

The materials industry has been able to develop and adapt products to satisfy the needs of the market. However, some newly introduced chemicals that pose to be advantageous from a performance or cost perspective may be associated with negative health effects. Populations that prove to be the most vulnerable to these chemicals are unborn and young children, as well as pregnant women.

Chemical classes with compounds suspected or proven to pose health concerns include orthophthalates (common plasticizers), halogenated flame retardants (HFR) and other per-fluorinated compounds (PFCs) and heavy metals, in addition to formaldehyde. Common pathways of exposure to these compounds are through inhalation or skin contact.

→ 2TEC2 avoids the use of chemicals that are associated with health concerns. Our product does not contain added Halogenated flame retardants, PFAS, Lead, Cadmium and Mercury. Moreover, 2TEC2 complies with the strictest emission standards and is 100% phthalate-free.

→ These tests were done in an accredited lab and are proof that 2TEC2 is safe in use. Our flooring can be walked on with bare feet, without any risk for your or your child's health.

## OPTIMIZATION

### X06 VOC Restrictions

VOCs can cause a wide range of health issue, ranging from nose, eye and throat irritation, headaches and nausea, to liver, kidney and central nervous system damage. While these compounds

are present outside, buildings are a net source due to emissions from materials. Newly installed flooring can significantly introduce VOCs into living spaces.

→ 2TEC2 flooring ensures a safe and healthy environment without indoor air pollution. Our floors are Floorscore® and Indoor Air Comfort® Gold certified, meaning they release no harmful VOCs.

→ 2TEC2 is tested by CDPH Standard Method regulations (V1.2) and is found to not trespass the established thresholds: TVOC < 85ug/m<sup>3</sup>

## OPTIMIZATION

### X07 Materials Transparency &

### X08 Materials Optimization

The global supply chain for material production is multi-tiered and complex. There is a lack of data and knowledge about different chemicals and their effects on human health. Additionally, building and construction materials are not required to have complete ingredient lists, which makes it difficult to make fully informed choices when selecting safer products.

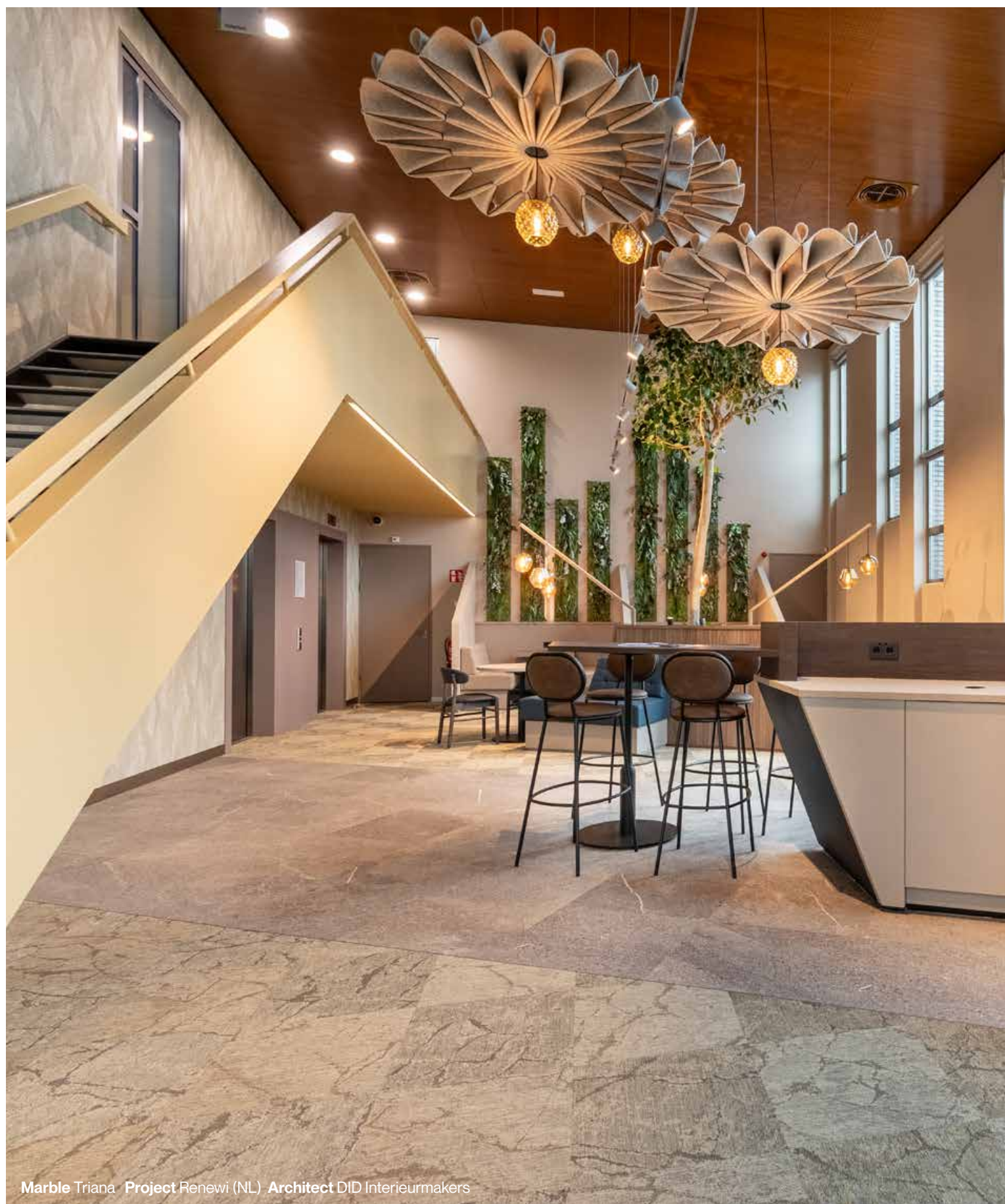
→ At 2TEC2, supply chain transparency is a top priority. We are committed to demonstrating that no harmful substances are used in the production of our flooring, while also raising awareness of material ingredients to enable informed decision-making. Our EPD's (calculated by GUT) are published on our website and our Product Sustainability Standard is available on request.

→ 2TEC2 is REACH-compliant: our floors do not contain any material ingredients listed on the REACH restrictions.











## **OPTIMIZATION**

### **X11 Cleaning Products and Protocols**

Cleaning is fundamental for keeping a healthy indoor environment. However, commercial cleaning products may contain ingredients that are suspected to be hazardous to human health. Some products may emit substances that irritate the nose, eyes, throat and lungs and can cause or trigger asthma attacks.

For general maintenance of 2TEC2, there is no need for hazardous chemical cleaning products. We recommend to only use water. Personal Protective Equipment (PPE) is not required when cleaning 2TEC2 flooring.

All instructions and necessary equipment can be found in our maintenance brochure and online videos. Personal advice and support are available at all times:

1. 2TEC2 collaborates with professional cleaning companies that can provide a cleaning plan on request.
2. Internal lab testing for cleaning products in specific cases is available on request.

[www.2tec2.com/support/maintenance](http://www.2tec2.com/support/maintenance)



2tec2<sup>®</sup>  
high tech flooring

Headquarters & showroom  
Chaussée d'Aelbeke 284 - 7700 Mouscron, Belgium  
+32 56 85 47 47 - sales@2tec2.com

[WWW.2TEC2.COM](http://WWW.2TEC2.COM)